

| | | |
|--|------------------------|---|
| WAAS CH 78326 W31A | APP CRS 311° | Rwy Idg 5107 TDZE 44 Apt Elev 45 |
|--|------------------------|---|

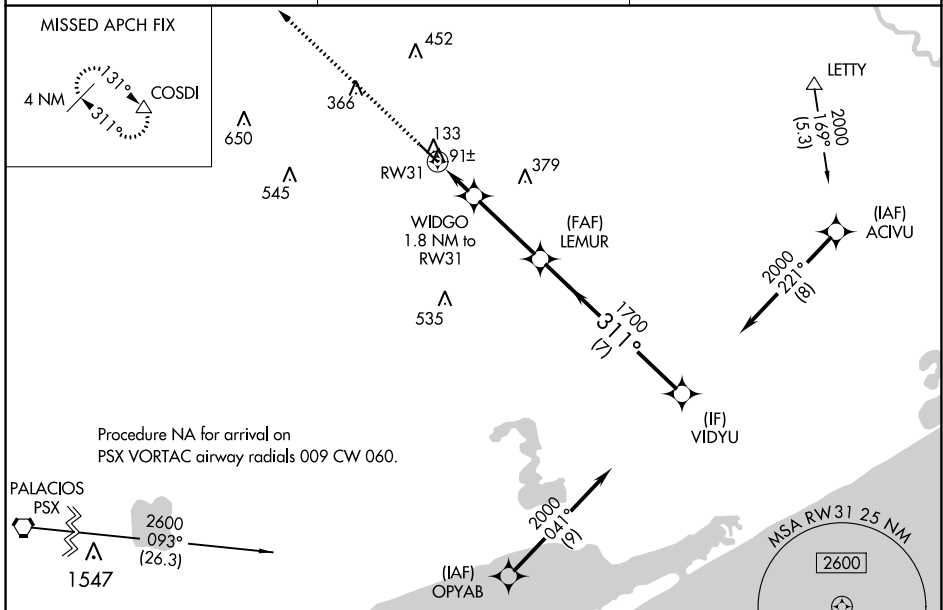
RNAV (GPS) RWY 31

BAY CITY RGNL (BYY)

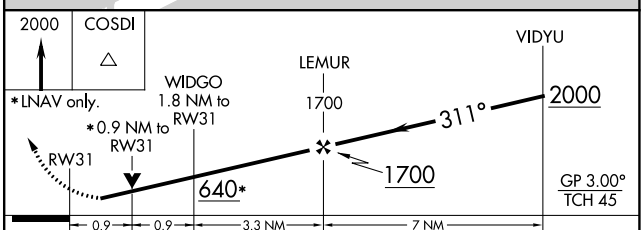
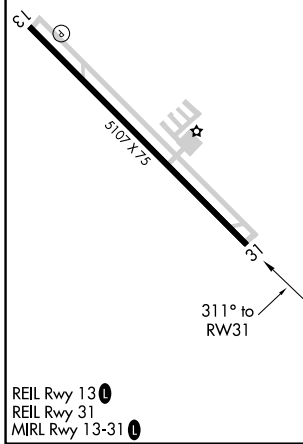
⚠ For uncompensated Baro-VNAV systems, LNAV/VNAV NA below -15°C (5°F) or above 54°C (130°F). Rwy 13, 31 helicopter visibility reduction below 1 SM NA. DME/DME RNP-0.3 NA. When local altimeter setting not received, use Palacios altimeter setting and increase all DA 63 feet and all MDA 80 feet; increase LNAV visibility Cat C ¼ mile. VDP and Baro-VNAV N/A when using Palacios altimeter setting.

⚠ MISSED APPROACH: Climb to 2000 direct COSDI and hold.

| | | |
|--------------------------|--------------------------------------|---------------------------------|
| AWOS-3 118.075 | HOUSTON CENTER 128.6 360.8 | UNICOM 122.8 (CTAF) 0 |
|--------------------------|--------------------------------------|---------------------------------|



| | |
|---------|---------|
| ELEV 45 | TDZE 44 |
|---------|---------|



| CATEGORY | A | B | C | D |
|-------------------|-------|-------------------|------------------------|----|
| LPV DA | | 294-1 250 (300-1) | | NA |
| LNAV/VNAV DA | | 294-1 250 (300-1) | | NA |
| LNAV MDA | | 360-1 316 (400-1) | | NA |
| C CIRCLING | 500-1 | 455 (500-1) | 620-1½ 575 (600-1½) | NA |

SC-5, 31 OCT 2024 to 28 NOV 2024

SC-5, 31 OCT 2024 to 28 NOV 2024