

VORTAC PSX 117.3 Chan 120	APP CRS 054°	Rwy Idg TDZE Apt Elev	N/A N/A 45
---	------------------------	-----------------------------	---------------------------------------

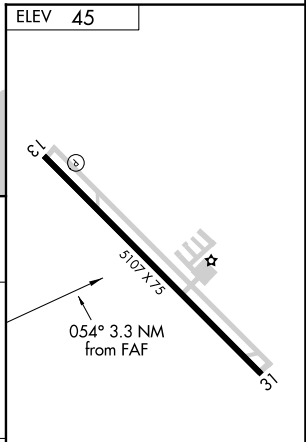
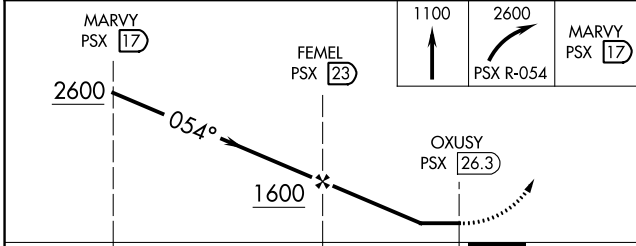
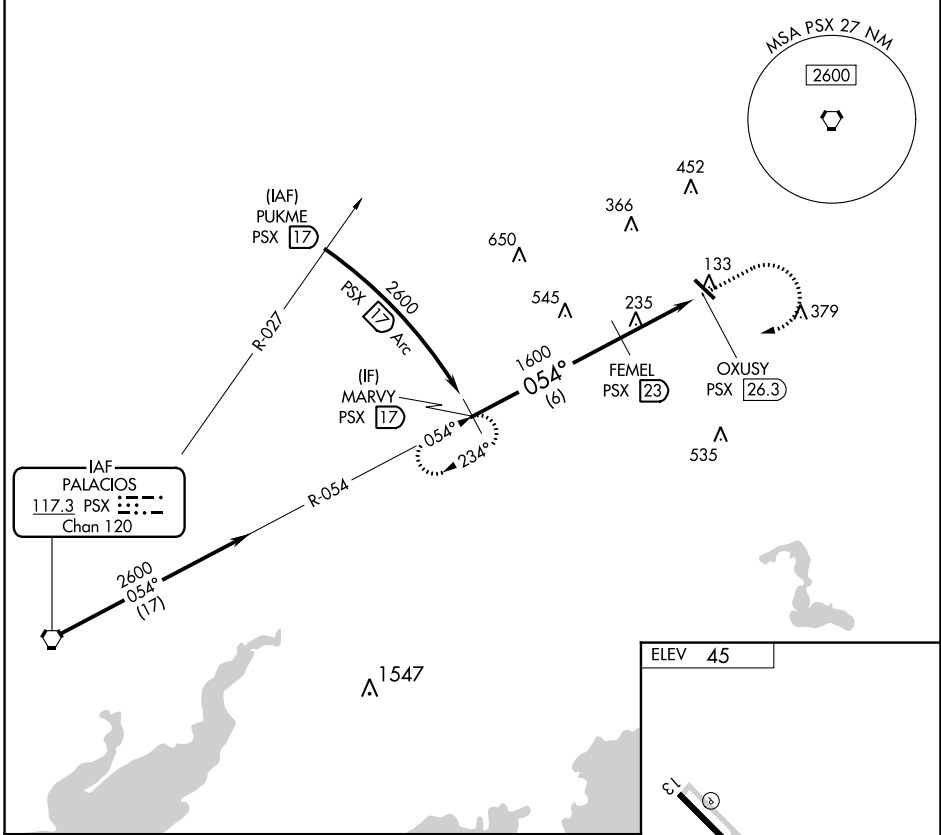
VOR-A

BAY CITY RGNL (BYT)

▼ Rwy 13, 31 helicopter visibility reduction below 1 SM NA.
▲ DME required. When local altimeter setting not received, use Palacios altimeter setting and increase all MDA 80 feet.

MISSED APPROACH: Climb to 1100 then climbing right turn to 2600 on PSX VORTAC R-054 to MARYV/17 DME and hold.

AWOS-3 118.075	HOUSTON CENTER 128.6 360.8	UNICOM 122.8 (CTAF) 📞
--------------------------	--------------------------------------	--



CATEGORY	A	B	C	D
📍 CIRCLING	1080-1¼ 1035 (1100-1¼)	1080-1½ 1035 (1100-1½)	1080-3 1035 (1100-3)	NA

REIL Rwy 13 **📞**
 REIL Rwy 31 **📞**
 MIRL Rwy 13-31 **📞**

SC-5, 31 OCT 2024 to 28 NOV 2024

SC-5, 31 OCT 2024 to 28 NOV 2024