

WYLSN EIGHT DEPARTURE (RNAV)

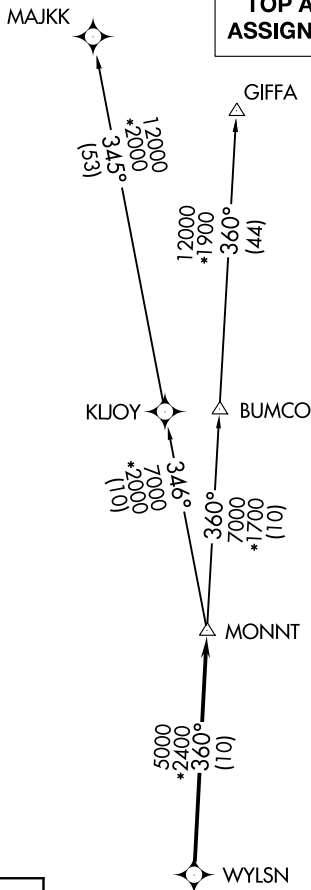
HOUSTON DEP CON
128.6 360.85

**TOP ALTITUDE:
ASSIGNED BY ATC**

NOTE: RADAR required.
NOTE: DME/DME/IRU or GPS required.
NOTE: RNAV 1.

TAKEOFF MINIMUMS

Rwy 13, 31: Standard with minimum
climb of 500' per NM to 560.



SC-5, 31 OCT 2024 to 28 NOV 2024

SC-5, 31 OCT 2024 to 28 NOV 2024



DEPARTURE ROUTE DESCRIPTION

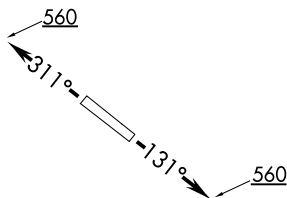
TAKEOFF RUNWAY 13: Climb on heading 131° to 560 for RADAR vectors to WYLSN, thence. . . .

TAKEOFF RUNWAY 31: Climb on heading 311° to 560 for RADAR vectors to WYLSN, thence. . . .

. . . .on track 360° to MONNT, then on (transition).
Maintain ATC assigned altitude. Expect filed altitude
10 minutes after departure.

GIFFA TRANSITION (WYLSN8.GIFFA)

MAJJK TRANSITION (WYLSN8.MAJKK)



NOTE: Chart not to scale.

WYLSN EIGHT DEPARTURE (RNAV)