

WAAS CH <b>78402</b> <b>W12A</b>	APP CRS <b>123°</b>	Rwy Idg TDZE Apt Elev	<b>3588</b> <b>1051</b> <b>1051</b>
--	------------------------	-----------------------------	---

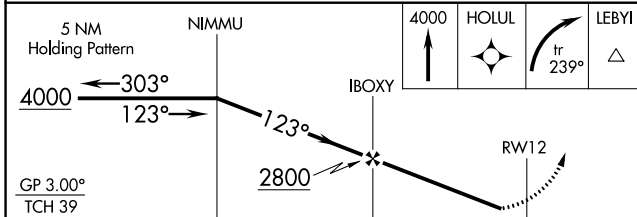
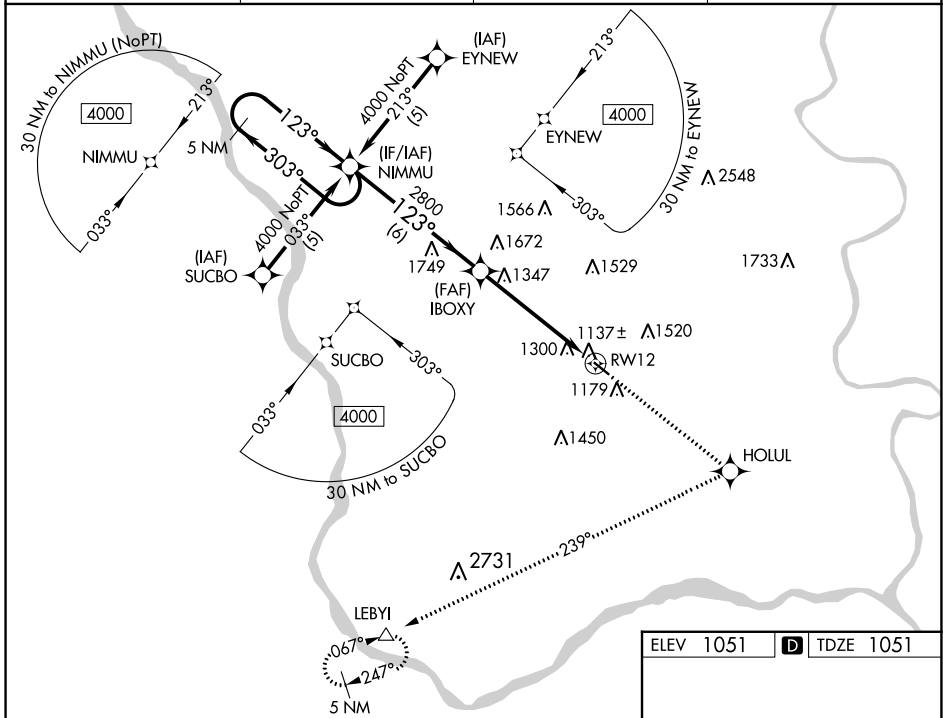
# RNAV (GPS) RWY 12

MILLARD (M.L.E.)

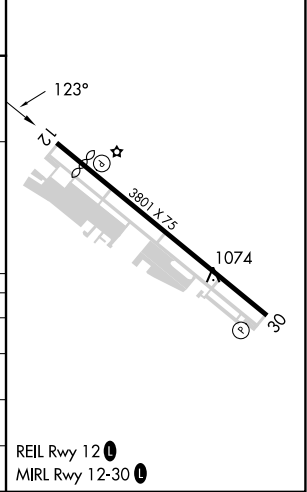
**⚠** DME/DME RNP-0.3 NA. If local altimeter setting not received, use Council Bluffs Muni altimeter setting and increase all DAs/MDAs 80 feet. Baro-VNAV NA when using Council Bluffs Muni altimeter setting. For uncompensated Baro-VNAV systems, LNAV/VNAV NA below -17°C (2°F) or above 54°C (130°F). Visibility reduction by helicopters NA.

**⚠** MISSED APPROACH: Climb to 4000 direct HOLUL and right turn via 239° track to LEBYI and hold.

AWOS-3 <b>118.25</b>	OMAHA APP CON <b>120.1 354.05</b>	CLNC DEL <b>125.4</b>	UNICOM <b>123.0 (CTAF) 0</b>
-------------------------	--------------------------------------	--------------------------	---------------------------------



ELEV 1051	<b>D</b> TDZE 1051
-----------	--------------------



CATEGORY	A	B	C	D
LPV DA	1387-1¼	336 (400-1¼)		NA
LNAV/VNAV DA	1668-2	617 (700-2)		NA
LNAV MDA	1660-1	609 (700-1)		NA
CIRCLING	1700-2 649 (700-2)	1720-2 669 (700-2)		NA

NC-2, 31 OCT 2024 to 28 NOV 2024

NC-2, 31 OCT 2024 to 28 NOV 2024