

# RNAV (GPS) RWY 11

LUCE COUNTY (ERY)

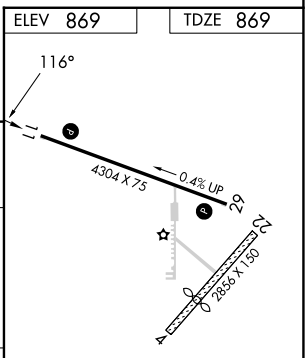
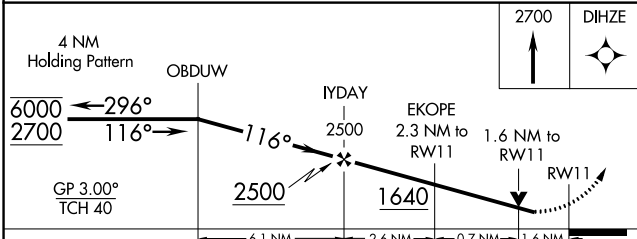
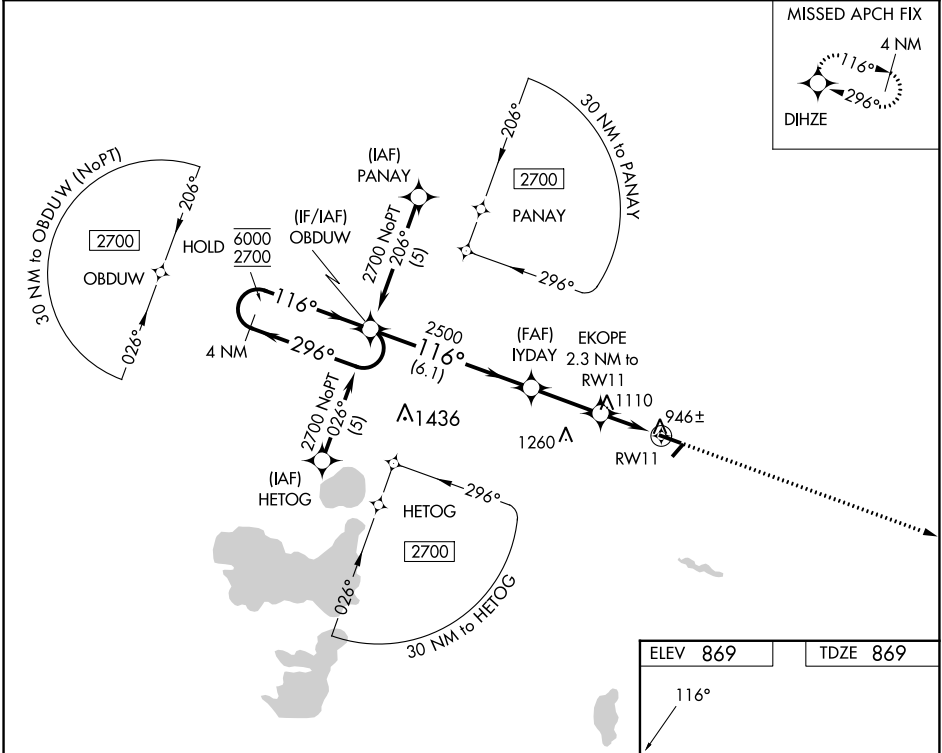
APP CRS <b>116°</b>	Rwy Idg <b>4304</b>
	TDZE <b>869</b>
	Apt Elev <b>869</b>

RNP APCH - GPS.

**⚠** Circling NA to Rwys 4 and 22. Rwy 11 helicopter visibility reduction below 3/4 SM NA.  
**⚠** For uncompensated Baro-VNAV systems, LNAV/VNAV NA below -16°C or above 54°C.

**MISSED APPROACH:**  
 Climb to 2700 direct  
 DIHZE and hold.

AWOS-3P <b>119.525</b>	MINNEAPOLIS CENTER <b>134.6 354.05</b>	UNICOM <b>122.8 (CTAF) 0</b>
---------------------------	---	---------------------------------



CATEGORY	A	B	C	D
LNAV/DA VNAV	1259-1 1/8		390 (400-1 1/8)	
LNAV MDA	1420-1 551 (600-1)		1420-1 5/8 551 (600-1 5/8)	
CIRCLING	1420-1 551 (600-1)		1460-1 5/8 591 (600-1 5/8) 1560-2 1/4 691 (700-2 1/4)	

MIRL Rwy 11-29 **0**  
 REIL Rwys 11 and 29 **0**

EC-1, 31 OCT 2024 to 28 NOV 2024

EC-1, 31 OCT 2024 to 28 NOV 2024