

WAAS CH 40418	APP CRS 296°	Rwy Idg TDZE Apt Elev	4304 867 869
W29A			

RNAV (GPS) RWY 29

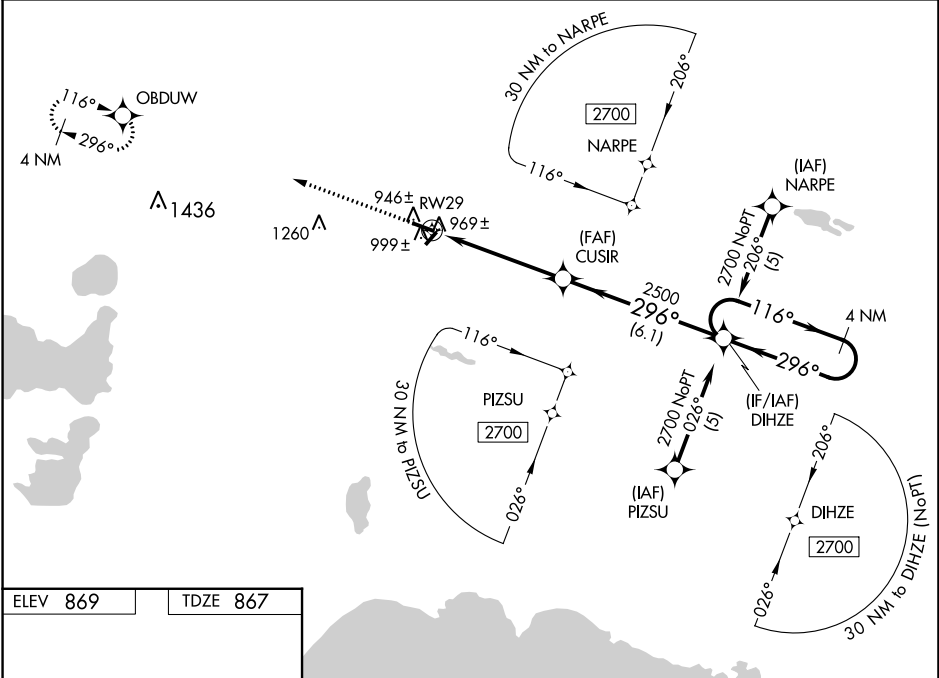
LUCE COUNTY (ERY)

RNP APCH - GPS.

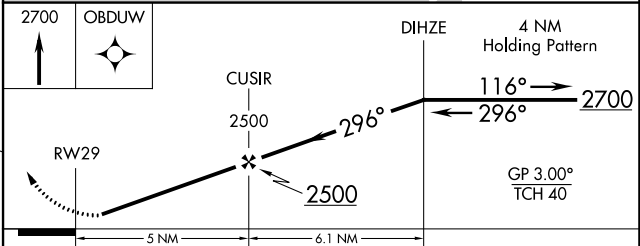
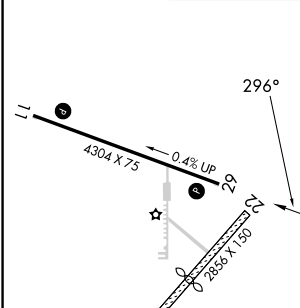
⚠ For uncompensated Baro-VNAV systems, LNAV/VNAV NA below -16°C or above 47°C. When local altimeter setting not received, use Chippewa County Intl altimeter setting and increase LPV DA to 1222 feet; increase LNAV/VNAV DA to 1344 feet; increase all MDAs 120 feet and LNAV visibility Cat C 3/8 SM and Cat D 1/8 SM, and Circling visibility Cat C/D 1/2 SM. Baro-VNAV NA when using Chippewa County Intl altimeter setting. Circling NA to Rwy 4 and 22. Rwy 29 helicopter visibility reduction below 3/4 NA.

MISSED APPROACH:
Climb to 2700 direct
OBDDW and hold.

AWOS-3P 119.525	MINNEAPOLIS CENTER 134.6 354.05	UNICOM 122.8 (CTAF) 0
---------------------------	---	---------------------------------



ELEV 869	TDZE 867
----------	----------



CATEGORY	A	B	C	D
LPV DA	1117-1		250 (300-1)	
LNAV/VNAV DA	1239-1½		372 (400-1½)	
LNAV MDA	1260-1		393 (400-1)	
CIRCLING	1300-1 431 (500-1)	1380-1 511 (600-1)	1460-1½ 591 (600-1½)	1560-2¼ 691 (700-2¼)

MIRL Rwy 11-29
REIL Rwy 11 and 29

NEWBERRY, MICHIGAN
Orig-B 21MAR24

46°19'N - 85°27'W

RNAV (GPS) RWY 29

LUCE COUNTY (ERY)

EC-1, 31 OCT 2024 to 28 NOV 2024

EC-1, 31 OCT 2024 to 28 NOV 2024