

WAAS CH 65717 W20A	APP CRS 195°	Rwy Idg 5900 TDZE 984 Apt Elev 984
--	------------------------	---

RNAV (GPS) RWY 20

FAYETTEVILLE MUNI (FYM)

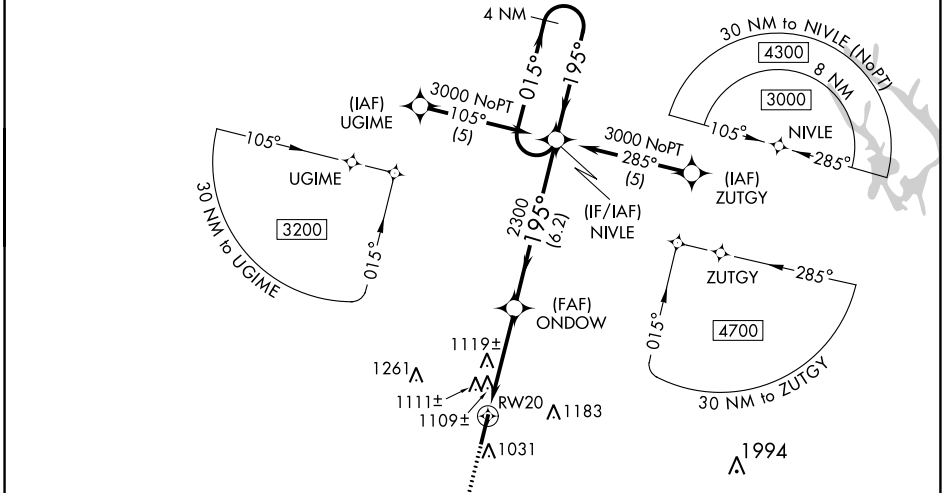
RNP APCH - GPS.

▼ For uncompensated Baro-VNAV systems, LNAV/VNAV NA below -16°C (4°F) or above 46°C (114°F). Rwy 20 helicopter visibility reduction below ¾ SM NA. When local altimeter setting not received use Huntsville Exec Tom Sharp Jr Fld altimeter setting and increase LPV DA to 1373 feet and all visibilities ½ SM; LNAV/VNAV DA to 1561 feet and all visibilities ¼ SM; increase all MDAs 120 feet and LNAV Cat C/D and Circling Cat C visibility ½ SM, Circling Cat D visibility ¼ SM. Baro-VNAV and VDP NA when using Huntsville Exec Tom Sharp Jr Fld altimeter setting. Inoperative table does not apply to LNAV/VNAV all Cats. Inoperative table does not apply to LNAV Cat C when using Huntsville Exec Tom Sharp Jr Fld altimeter setting.

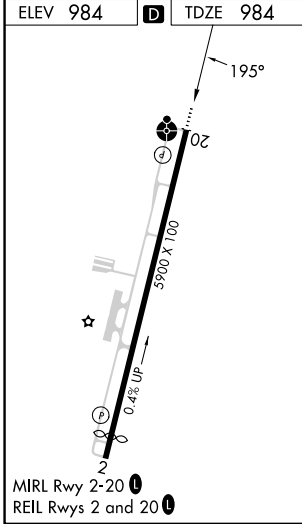
ODALS

MISSED APPROACH: Climb to 3000 direct EZBUB and hold.

AWOS-3 135.275	HUNTSVILLE APP CON * 125.6 354.1	CLNC DEL (GCO) 121.725	UNICOM 122.8 (CTAF)
--------------------------	--	----------------------------------	-------------------------------



ELEV 984	D	TDZE 984
----------	----------	----------



3000 EZBUB VGSJ and RNAV glidepath not coincident (VGSJ Angle 3.00/TCH 20). 4 NM Holding Pattern

*LNAV only.

ONDOW

RW20

2300

2300

3000

GP 3.00° TCH 40

1.2 NM 2.8 NM 6.2 NM

CATEGORY	A	B	C	D
LPV DA	1260-1 276 (300-1)			
LNAV/VNAV DA	1448-1¾ 464 (500-1¾)			
LNAV MDA	1380-¾ 396 (400-¾)			1380-1¼ 396 (400-1¼)
CIRCLING	1420-1 436 (500-1)	1540-1 556 (600-1)	1580-1½ 596 (600-1½)	1580-2 596 (600-2)

SE-1, 31 OCT 2024 to 28 NOV 2024

SE-1, 31 OCT 2024 to 28 NOV 2024