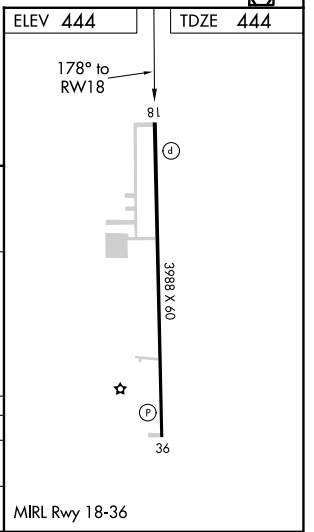
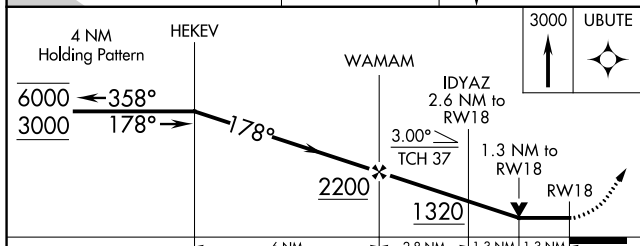
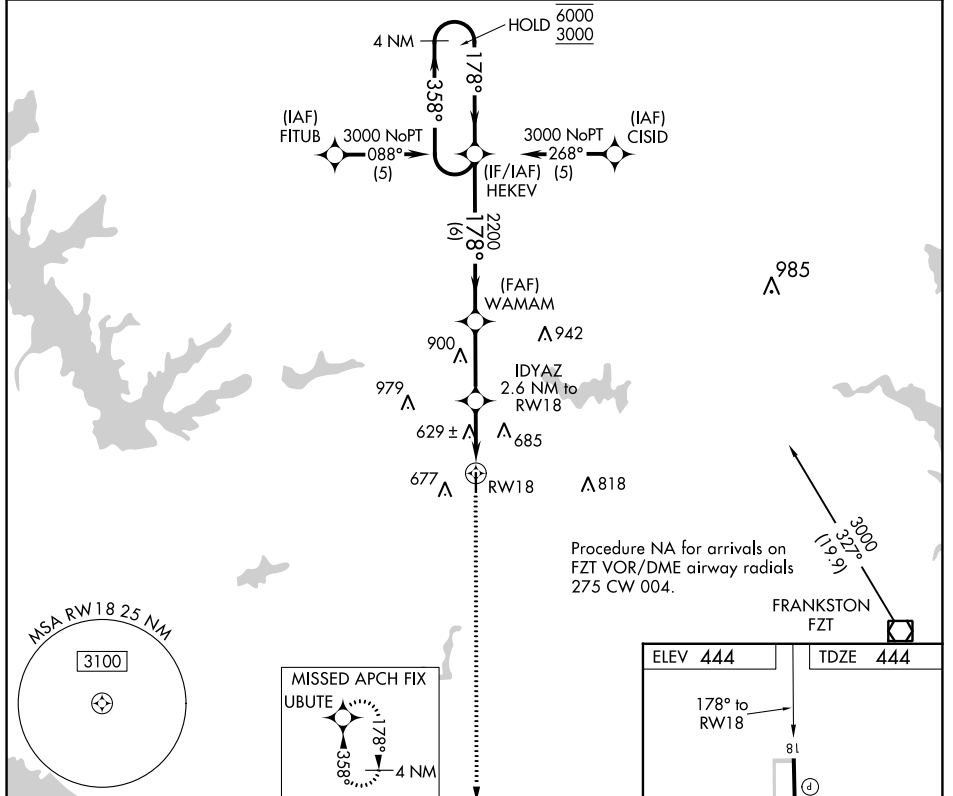


APP CRS	Rwy Idg	3988
178°	TDZE	444
	Apt Elev	444

RNAV (GPS) RWY 18

ATHENS MUNI (F44)

RNP APCH.		MISSED APPROACH: Climb to 3000 direct UBUTE and hold.
<p>▼ Rwy 18 helicopter visibility reduction below $\frac{3}{4}$ SM NA. ▲ When local altimeter setting not received, procedure NA.</p>		
AWOS-3PT 119.6	FORT WORTH CENTER 135.25 265.1	UNICOM 123.0 (CTAF)



CATEGORY	A	B	C	D
LNVA MDA	880-1	436 (500-1)	NA	
CIRCLING	980-1 536 (600-1)	1000-1 556 (600-1)	NA	

SC-2, 31 OCT 2024 to 28 NOV 2024

SC-2, 31 OCT 2024 to 28 NOV 2024