

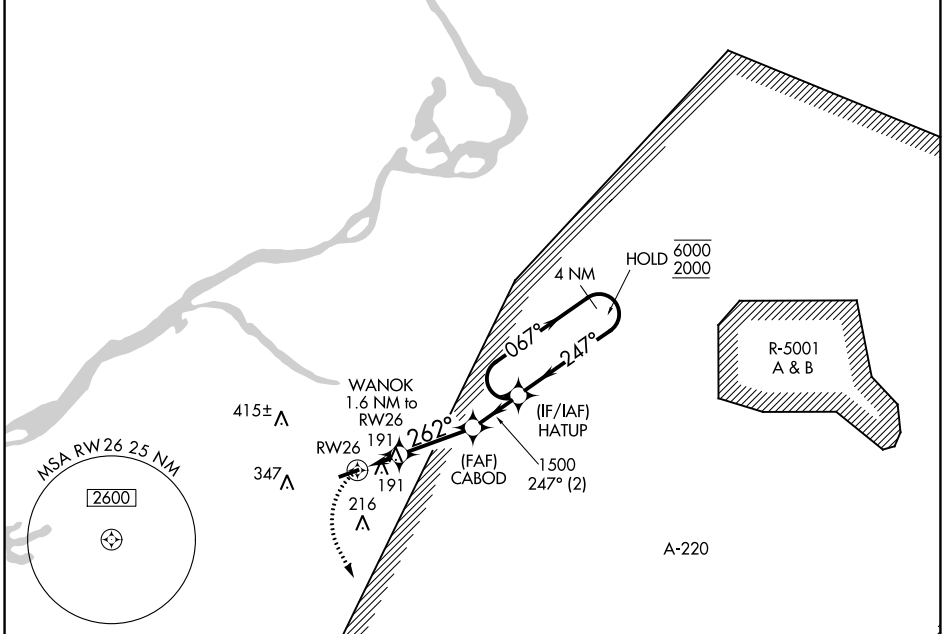
APP CRS	Rwy Idg	3881
262°	TDZE	53
	Apt Elev	53

RNAV (GPS) RWY 26

SOUTH JERSEY RGNL (VAY)

RNP APCH.		MISSED APPROACH: Climbing left turn to 2000 direct INNEZ and hold.	
Rwy 26 helicopter visibility reduction below 1 SM NA. Procedure NA at night.			

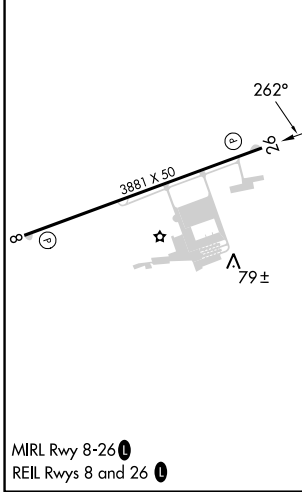
ASOS	MC GUIRE APP CON	UNICOM	123.3
119.325	126.475 363.8	122.8 (CTAF)	



NE-2, 31 OCT 2024 to 28 NOV 2024

NE-2, 31 OCT 2024 to 28 NOV 2024

ELEV 53	TDZE 53
---------	---------



	2000 INNEZ	WANOK 1.6 NM to RWY 26	CABOD	HATUP	4 NM Holding Pattern
	△	1500	1500	067° → 6000	← 247° 2000
		600	3.00° TCH 40		
		1.6 NM	2.8 NM	2 NM	
CATEGORY	A	B	C	D	
LNAV MDA	480-1	427 (500-1)			NA
CIRCLING	520-1	540-1			NA
	467 (500-1)	487 (500-1)			