

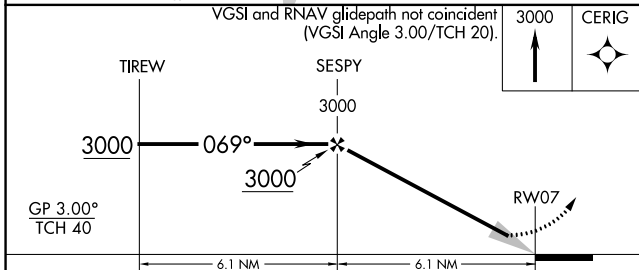
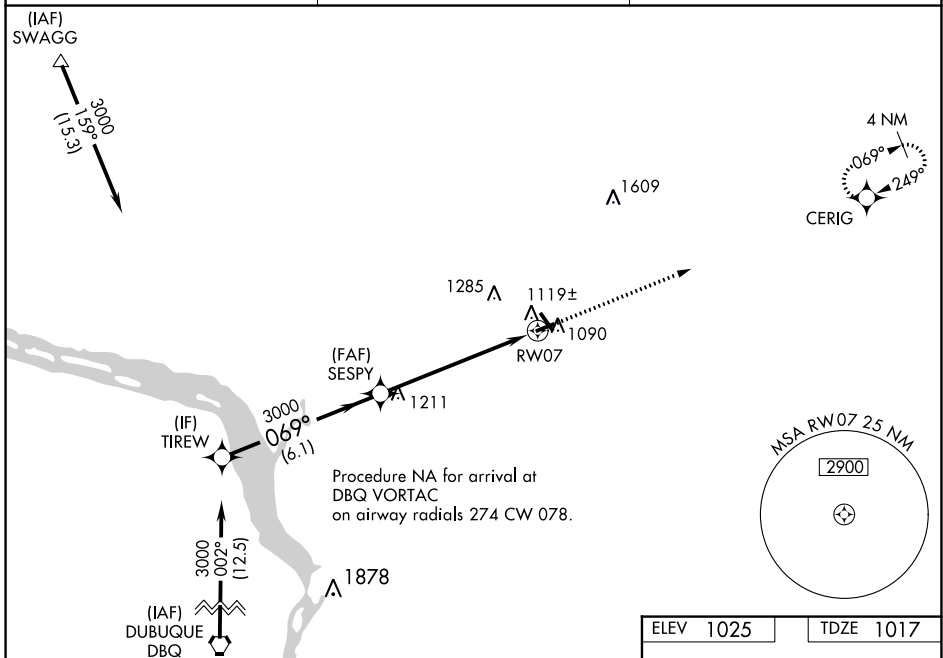
WAAS CH <b>82315</b> <b>W07A</b>	APP CRS <b>069°</b>	Rwy Idg TDZE Apt Elev <b>3600</b> <b>1017</b> <b>1025</b>
--	------------------------	--

# RNAV (GPS) RWY 7

PLATTEVILLE MUNI (PVB)

RNP APCH - GPS.	<p><b>MISSED APPROACH:</b> Climb to 3000 direct CERIG and hold.</p>
<p><b>⚠</b> For uncompensated Baro-VNAV systems, LNAV/VNAV NA below -17°C or above 54°C. Straight-in Rwy 7 NA at night, Circling Rwy 7, 25 NA at night. Rwy 7 helicopter visibility reduction below 1 SM NA.</p>	

AWOS-3 <b>120.575</b>	CHICAGO CENTER <b>133.95 281.4</b>	UNICOM <b>122.7 (CTAF) 0</b>
--------------------------	---------------------------------------	---------------------------------



ELEV 1025	TDZE 1017
-----------	-----------

15

33

7-25

15-33

4000 X 75

3600 X 75

0.8% UP

069°

REIL Rwy 15 and 33

MIRL Rwy 7-25 and 15-33

CATEGORY	A	B	C	D
LPV DA	1284-1	267 (300-1)		NA
LNAV/VNAV DA	1407-1½	390 (400-1½)		NA
LNAV MDA	1480-1	463 (500-1)		NA
CIRCLING	1480-1 455 (500-1)	1600-1 575 (600-1)	1600-1½ 575 (600-1½)	NA

EC-3, 31 OCT 2024 to 28 NOV 2024

EC-3, 31 OCT 2024 to 28 NOV 2024