

WAAS CH <b>99304</b> <b>W22A</b>	APP CRS <b>227°</b>	Rwy Idg <b>5000</b> TDZE <b>1642</b> Apt Elev <b>1642</b>
--	------------------------	---

# RNAV (GPS) RWY 22

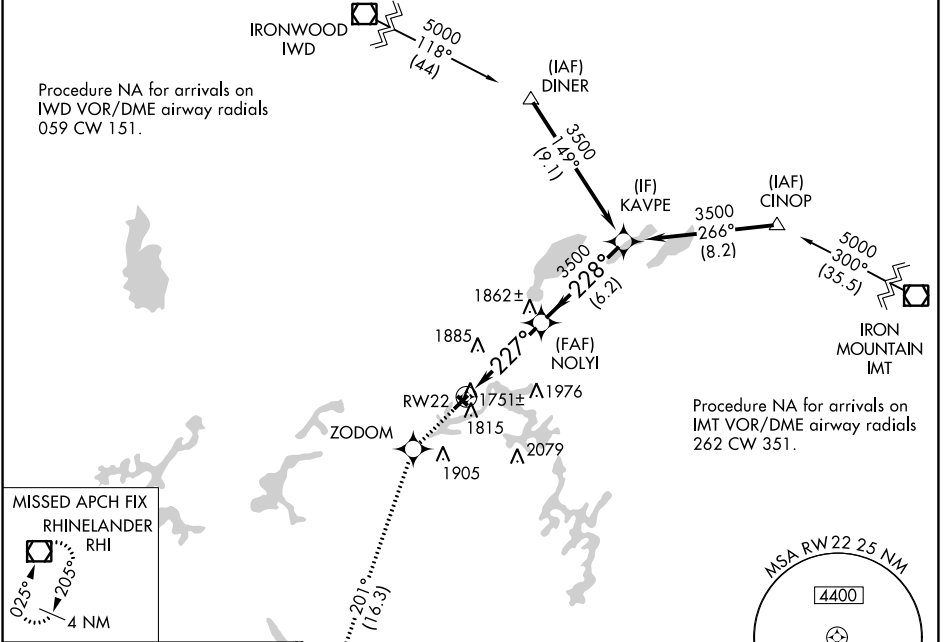
EAGLE RIVER UNION (EGV)

RNP APCH.

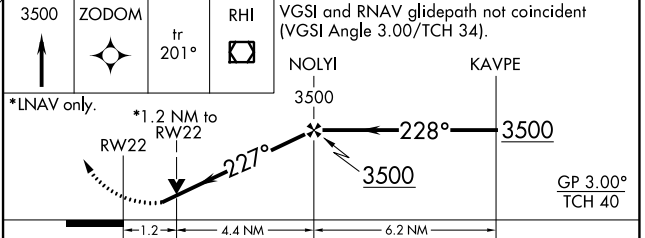
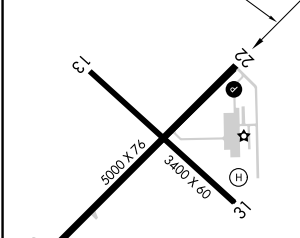
MISSED APPROACH:

Baro-VNAV and VDP NA when using Minocqua-Woodruff altimeter setting. For uncompensated Baro-VNAV systems, LNAV/VNAV NA below -18°C or above 45°C. When local altimeter setting not received, use Minocqua-Woodruff altimeter setting and increase LPV DA to 2059, LNAV/VNAV DA to 2085, and all MDAs 60 feet. Increase Circling Cat C/D visibility ¼ SM. Rwy 22 helicopter visibility reduction below ¼ SM NA.

AWOS-3 <b>118.325</b>	MINNEAPOLIS CENTER <b>133.65 281.5</b>	UNICOM <b>122.8 (CTAF)</b>
--------------------------	---	-------------------------------



ELEV 1642	TDZE 1642
-----------	-----------



CATEGORY	A	B	C	D
LPV DA		2012-1¼	370 (400-1¼)	
LNAV/VNAV DA		2038-1½	396 (400-1½)	
LNAV MDA	2040-1	398 (400-1)	2040-1⅛ 398 (400-1⅛)	2040-1¼ 398 (400-1¼)
CIRCLING	2120-1	478 (500-1)	2260-1¾ 618 (700-1¾)	2340-2¼ 698 (700-2¼)

REIL Rws 4 and 22 **1**

MIRL Rws 4-22 and 13-31 **1**

EC-3, 31 OCT 2024 to 28 NOV 2024

EC-3, 31 OCT 2024 to 28 NOV 2024