

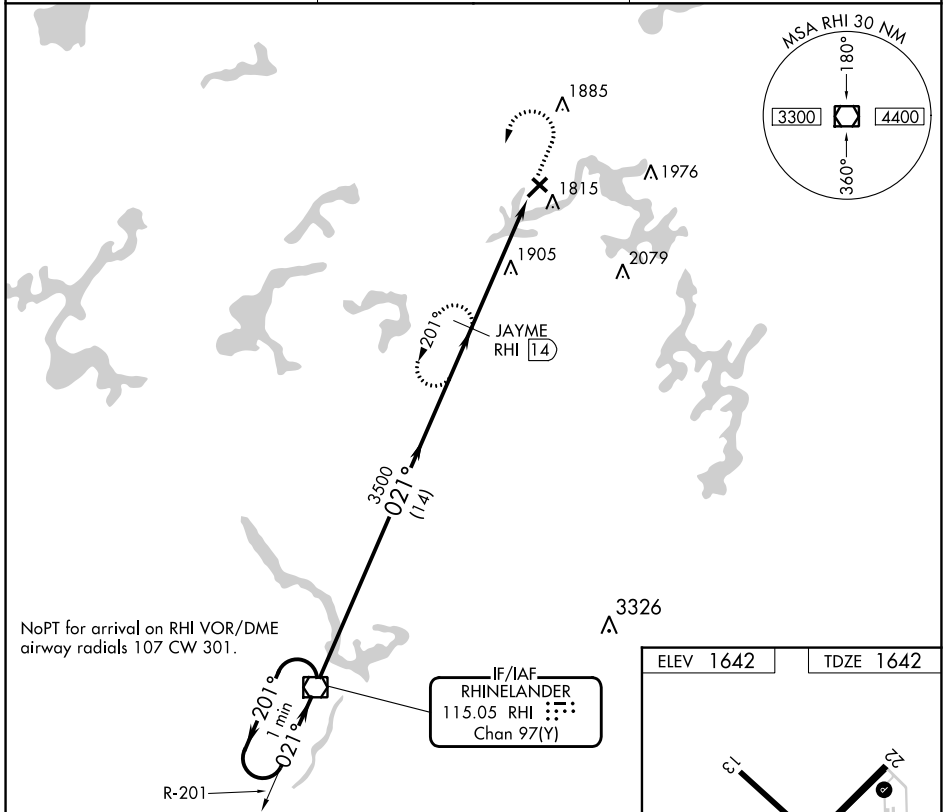
VOR/DME RHI	APP CRS	Rwy Idg	5000
115.05	021°	TDZE	1642
Chan 97(Y)		Apt Elev	1642

VOR/DME RWY 4

EAGLE RIVER UNION (EGV)

⚠ MISSED APPROACH: Climb to 3500 then left turn on RHI VOR/DME R-021 to JAYME/14 DME and hold.

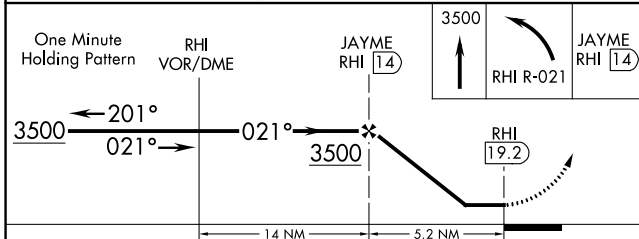
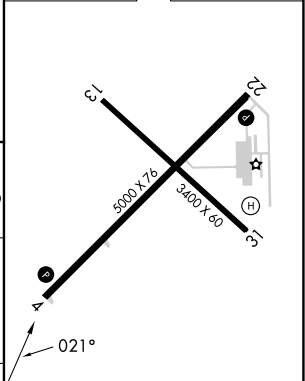
AWOS-3 118.325	MINNEAPOLIS CENTER 133.65 281.5	UNICOM 122.8 (CTAF) 📶
--------------------------	---	--



NoPT for arrival on RHI VOR/DME airway radials 107 CW 301.

IF/IAF
RHINELANDER
115.05 RHI
Chan 97(Y)

ELEV 1642	TDZE 1642
-----------	-----------



CATEGORY	A	B	C	D	E
S-4	2260-1	618 (700-1)	2260-1 ³ / ₄ 618 (700-1 ³ / ₄)	2260-2 618 (700-2)	NA
CIRCLING	2260-1	618 (700-1)	2260-1 ³ / ₄ 618 (700-1 ³ / ₄)	2340-2 ¹ / ₄ 698 (700-2 ¹ / ₄)	NA

REIL Rwy 4 and 22 **📶**
MIRL Rwy 4-22 and 13-31 **📶**

EC-3, 31 OCT 2024 to 28 NOV 2024

EC-3, 31 OCT 2024 to 28 NOV 2024