

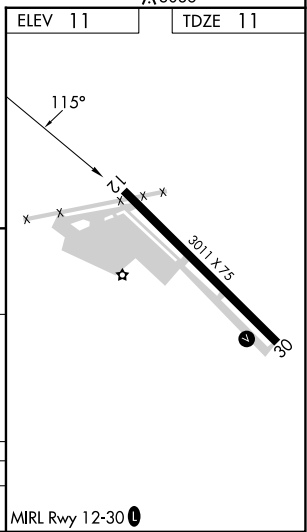
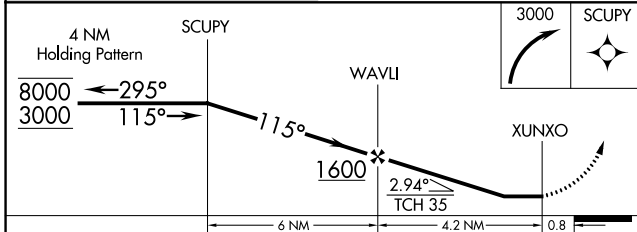
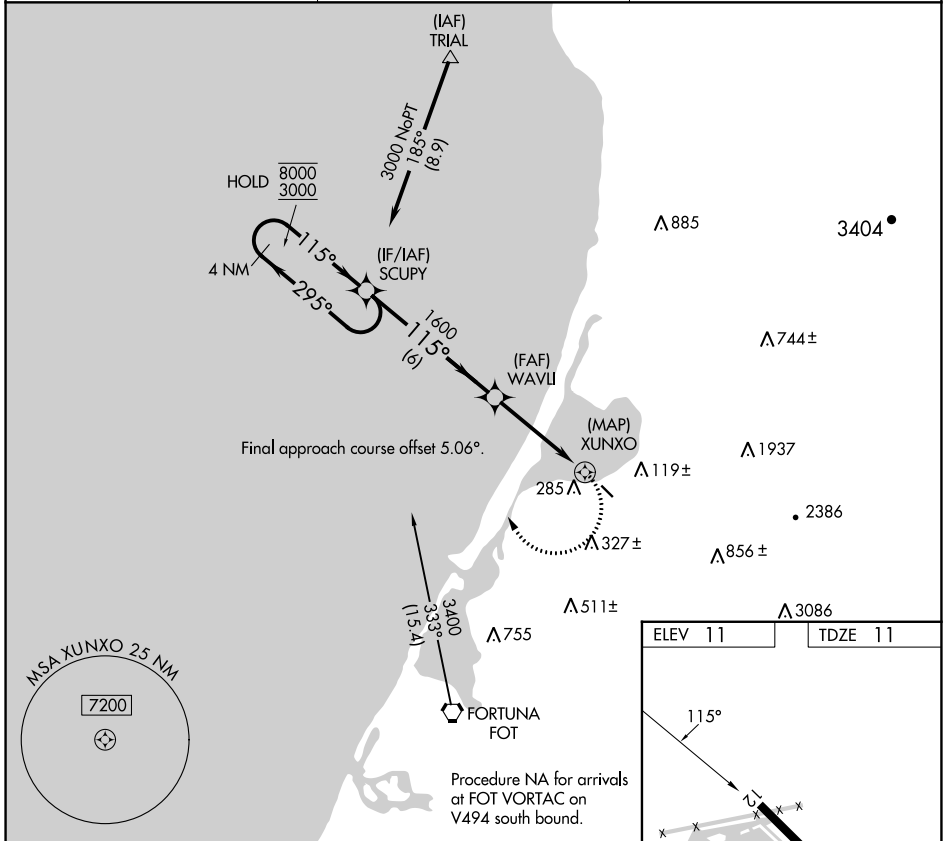
APP CRS	Rwy Idg	3011
115°	TDZE	11
	Apt Elev	11

RNAV (GPS) RWY 12

MURRAY FLD (EKA)

RNP APCH.	<p>Procedure NA at night. Rwy 12 helicopter visibility reduction below 1 SM NA.</p> <p>Use Arcata altimeter setting, when not received use Crescent City altimeter setting and increase all MDA 100 feet and increase LNAV Cat C visibility ¼ SM.</p>	<p>MISSED APPROACH: Climbing right turn to 3000 direct SCUPY and hold.</p>
<p>▼ Procedure NA at night. Rwy 12 helicopter visibility reduction below 1 SM NA.</p> <p>▲ NA Use Arcata altimeter setting, when not received use Crescent City altimeter setting and increase all MDA 100 feet and increase LNAV Cat C visibility ¼ SM.</p>		

ACV ASOS 118.525	SEATTLE CENTER 124.85 306.3	UNICOM 122.7 (CTAF) 0
----------------------------	---------------------------------------	---------------------------------



CATEGORY	A	B	C	D
LNAV MDA	760-1 749 (800-1)	760-1¼ 749 (800-1¼)	760-2¼ 749 (800-2¼)	NA

SW-2, 31 OCT 2024 to 28 NOV 2024

SW-2, 31 OCT 2024 to 28 NOV 2024