

LINDZ ONE DEPARTURE

AL-5889 (FAA)

ASPEN-PITKIN COUNTY/SARDY FLD (ASE)
ASPEN, COLORADO

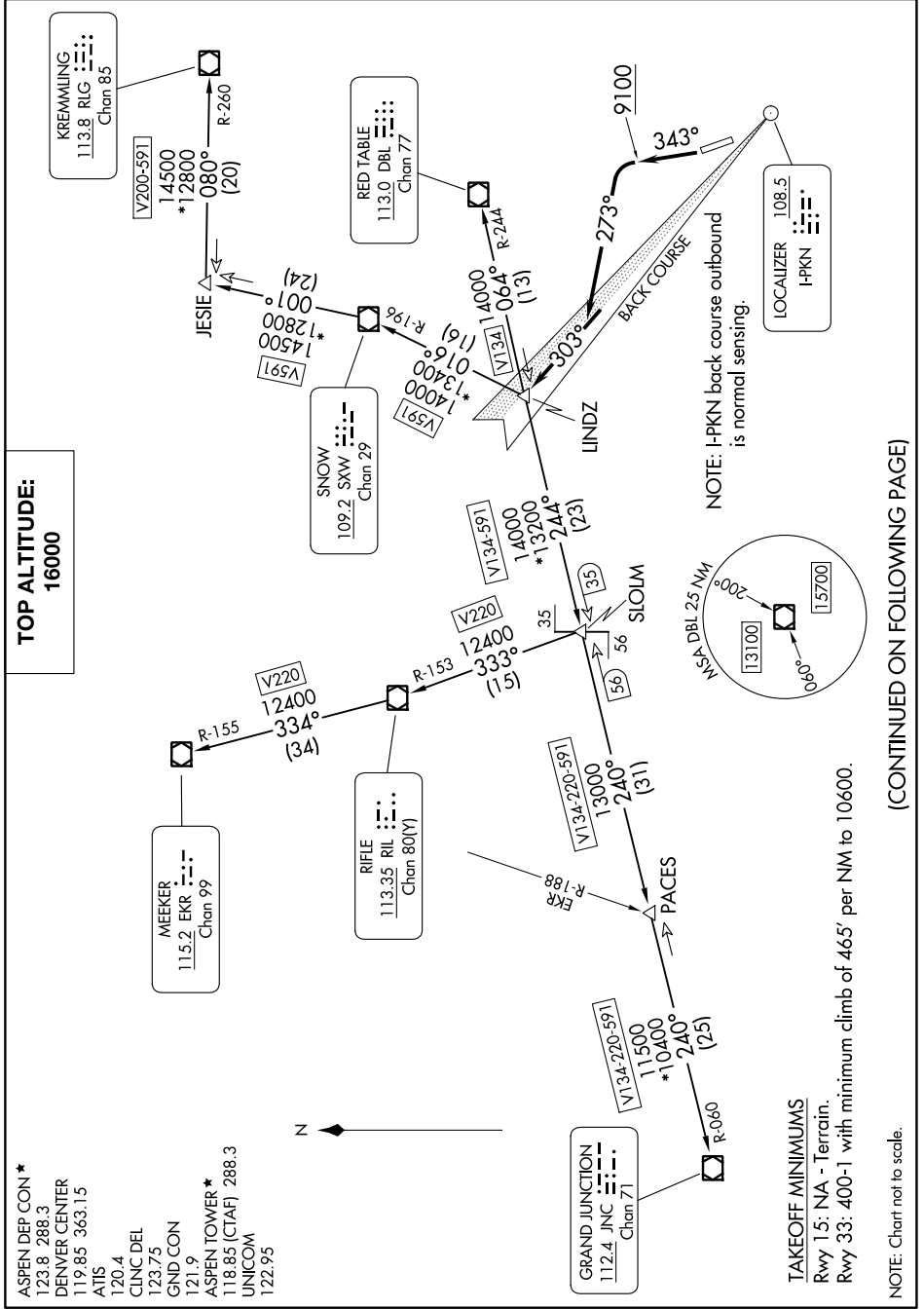
SW-1, 31 OCT 2024 to 28 NOV 2024

**TOP ALTITUDE:
16000**

ASPEN DEP CON *
 123.8 288.3
 DENVER CENTER
 119.85 363.15
 ATIS
 120.4
 CLNC DEL
 123.75
 GND CON
 121.9
 ASPEN TOWER *
 118.85 (CTAF) 288.3
 UNICOM
 122.95

LINDZ ONE DEPARTURE

(LINDZ1.LINDZ) 16MAY24



(CONTINUED ON FOLLOWING PAGE)

SW-1, 31 OCT 2024 to 28 NOV 2024

ASPEN, COLORADO
ASPEN-PITKIN COUNTY/SARDY FLD (ASE)

TAKEOFF MINIMUMS
 Rwy 15: NA - Terrain.
 Rwy 33: 400-1 with minimum climb of 465' per NM to 10600.