


(OOM5.OOM) 23334


HOOSIER FIVE DEPARTURE


AL-5902 (FAA)

INDIANAPOLIS METRO (UMP)
INDIANAPOLIS, INDIANA

AWOS-3
119.375
CLNC DEL
121.625
INDIANAPOLIS DEP CON
127.15 317.8

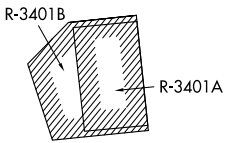
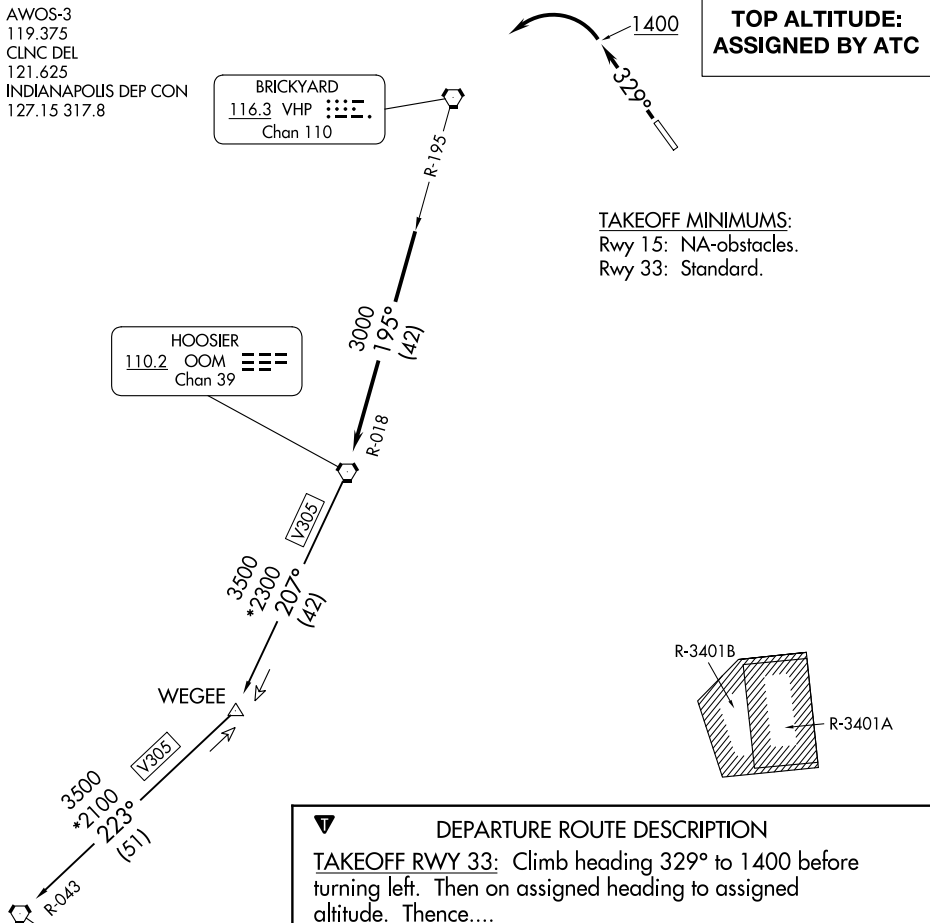
BRICKYARD
116.3 VHP 
Chan 110

HOOSIER
110.2 OOM 
Chan 39

POCKET CITY
113.3 PXV 
Chan 80

**TOP ALTITUDE:
ASSIGNED BY ATC**

TAKEOFF MINIMUMS:
Rwy 15: NA-obstacles.
Rwy 33: Standard.



DEPARTURE ROUTE DESCRIPTION

TAKEOFF RWY 33: Climb heading 329° to 1400 before turning left. Then on assigned heading to assigned altitude. Thence....

DEPARTING ALL OTHER AUTHORIZED RUNWAYS: Climb on assigned heading to assigned altitude. Thence....

....expect RADAR vectors to join VHP R-195 to OOM VORTAC then via transition or assigned route. Expect clearance to requested altitude ten minutes after departure.

POCKET CITY TRANSITION (OOM5.PXV): From over OOM VORTAC via OOM R-207 to WEGEE, then via PXV R-043 to PXV VORTAC.

- NOTE: RADAR required.
- NOTE: Select appropriate localizer/DME frequency/channel prior to departure.
- NOTE: Turbojets accelerate to 250K until reaching 10000, if unable advise ATC.
- NOTE: Assigned to aircraft with a requested altitude of 11000 or above.

NOTE: Chart not to scale.

EC-2, 31 OCT 2024 to 28 NOV 2024

EC-2, 31 OCT 2024 to 28 NOV 2024

HOOSIER FIVE DEPARTURE

(OOM5.OOM) 01FEB18

INDIANAPOLIS, INDIANA
INDIANAPOLIS METRO (UMP)