

(MEARZ7.MEARZ) 23334
MEARZ SEVEN DEPARTURE AL-5902 (FAA)

INDIANAPOLIS METRO (UMP)
 INDIANAPOLIS, INDIANA

**TOP ALTITUDE:
 ASSIGNED BY ATC**

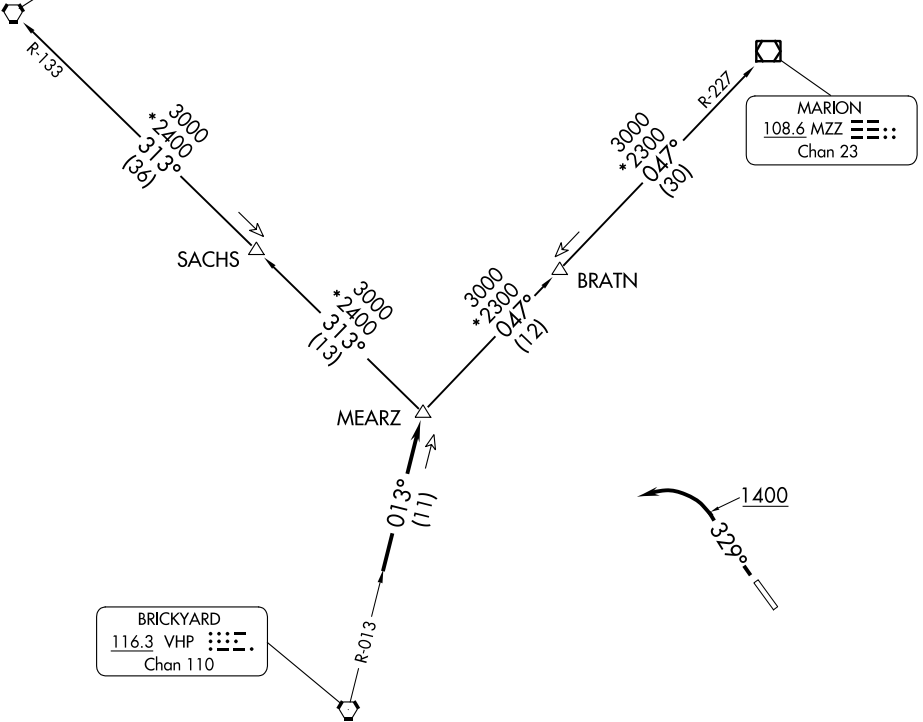
RADAR required.

AWOS-3
 119.375
 CLNC DEL
 121.625
 INDIANAPOLIS DEP CON
 127.15 317.8

BOILER
 115.1 BVT
 Chan 98

MARION
 108.6 MZZ
 Chan 23

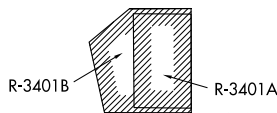
BRICKYARD
 116.3 VHP
 Chan 110



TAKEOFF MINIMUMS
 Rwy 15: NA - obstacles.
 Rwy 33: Standard.

- NOTE: Turbojets accelerate to 250K until reaching 10000, if unable advise ATC.
- NOTE: Assigned to aircraft with a requested altitude of 11000 or above.
- NOTE: Select appropriate localizer/DME frequency/channel prior to departure.

(NARRATIVE ON FOLLOWING PAGE)



NOTE: Chart not to scale.

EC-2, 31 OCT 2024 to 28 NOV 2024

EC-2, 31 OCT 2024 to 28 NOV 2024

MEARZ SEVEN DEPARTURE
 (MEARZ7.MEARZ) 19MAY22

INDIANAPOLIS, INDIANA
 INDIANAPOLIS METRO (UMP)