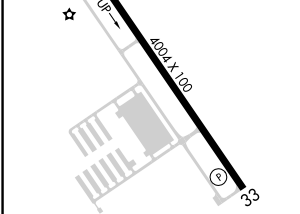
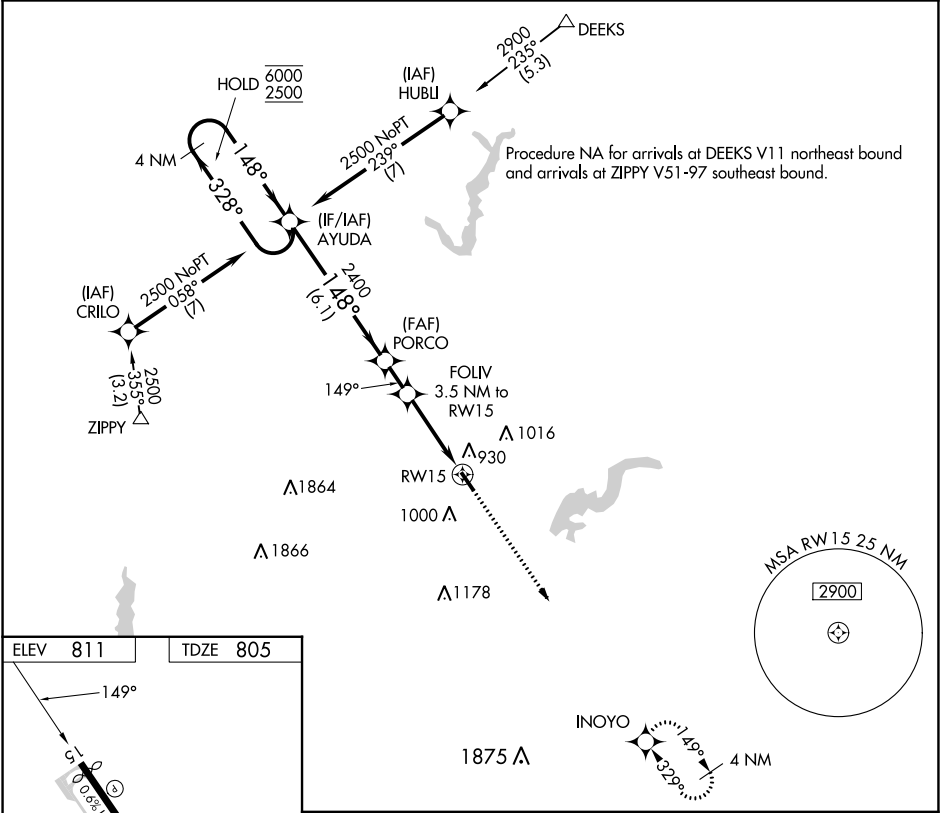


APP CRS	Rwy Idg	3848
149°	TDZE	805
	Apt Elev	811

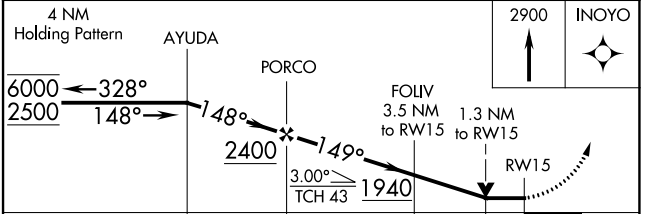
RNAV (GPS) RWY 15

INDIANAPOLIS METRO (UMP)

RNP APCH - GPS.		MISSED APPROACH: Climb to 2900 direct INOYO and hold.	
AWOS-3PT 119.375	INDIANAPOLIS APP CON 127.15 317.8	CLNC DEL 121.625	UNICOM 123.0 (CTAF) 0



ELEV	811	TDZE	805
MIRL Rwy 15-33 0			
REIL Rwy 15 and 33 0			



CATEGORY	A	B	C	D
LNAV MDA	1240-1	435 (500-1)	1240-1/4 435 (500-1/4)	NA
CIRCLING	1320-1 509 (600-1)	1340-1 529 (600-1)	1340-1/2 529 (600-1/2)	NA

EC-2, 31 OCT 2024 to 28 NOV 2024

EC-2, 31 OCT 2024 to 28 NOV 2024