

APP CRS 329°	Rwy Idg TDZE Apt Elev	4004 811 811
------------------------	-----------------------------	---

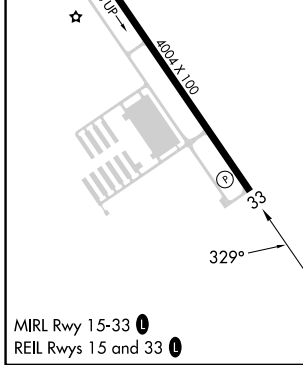
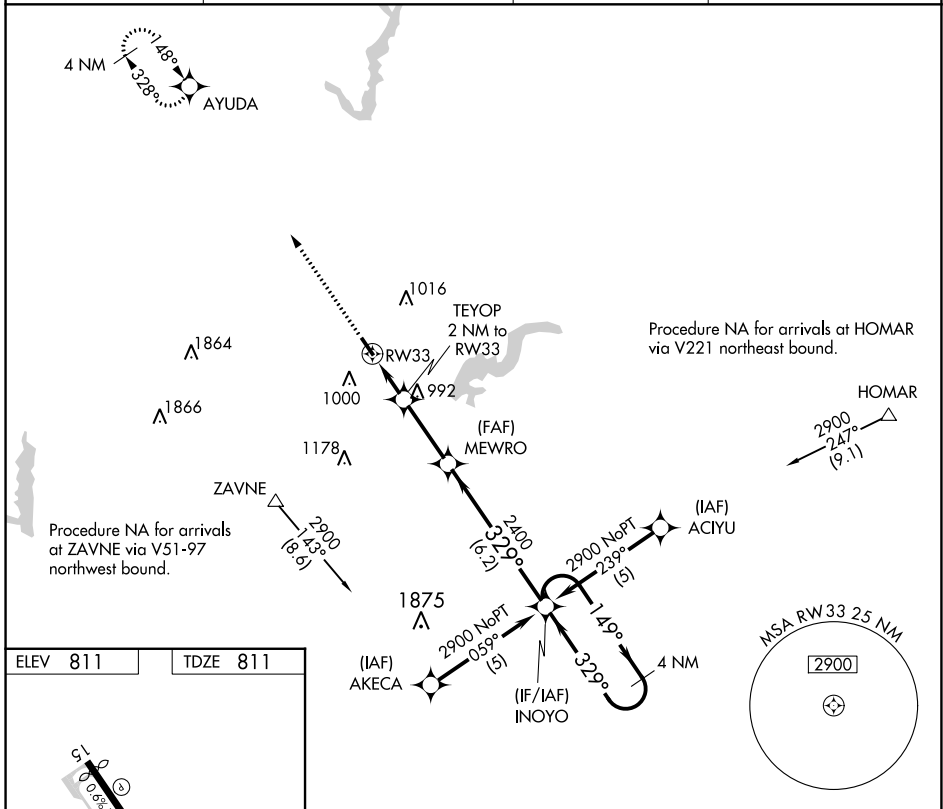
RNAV (GPS) RWY 33

INDIANAPOLIS METRO (UMP)

▽ DME/DME RNP-0.3 NA. When local altimeter setting not received, use Indianapolis Intl altimeter setting and increase all MDA 60 feet and LNAV Cat C visibility ¼ mile. VDP NA when using Indianapolis Intl altimeter setting. Rwy 33 helicopter visibility reduction below ¾ SM NA.

△ NA MISSED APPROACH: Climb to 2500 direct AYUDA and hold.

AWOS-3PT 119.375	INDIANAPOLIS APP CON 127.15 317.8	CLNC DEL 121.625	UNICOM 123.0 (CTAF) 0
----------------------------	---	----------------------------	---------------------------------



ELEV 811	TDZE 811	2500 AYUDA		VGSIs and descent angles not coincident (VGSi Angle 3.50/TCH 27).		INOYO 4 NM Holding Pattern	
		1.1 NM to RW33	TEYOP 2 NM to RW33	MEWRO	INOYO	2900	2900
		1480	1480	2400	2400	149°	329°
		1.1	0.9 NM	2.8 NM	6.2 NM		
CATEGORY	A	B	C	D			
LNAV MDA	1260-1	449 (500-1)	1260-1¼ 449 (500-1¼)	NA			
C CIRCLING	1320-1 509 (600-1)	1340-1 529 (600-1)	1340-1½ 529 (600-1½)	NA			

EC-2, 31 OCT 2024 to 28 NOV 2024

EC-2, 31 OCT 2024 to 28 NOV 2024