

VOR/DME SHB <b>116.15</b> Chan <b>108</b> (Y)	APP CRS <b>330°</b>	Rwy Idg TDZE Apt Elev	<b>4004</b> <b>811</b> <b>811</b>
---	------------------------	-----------------------------	---

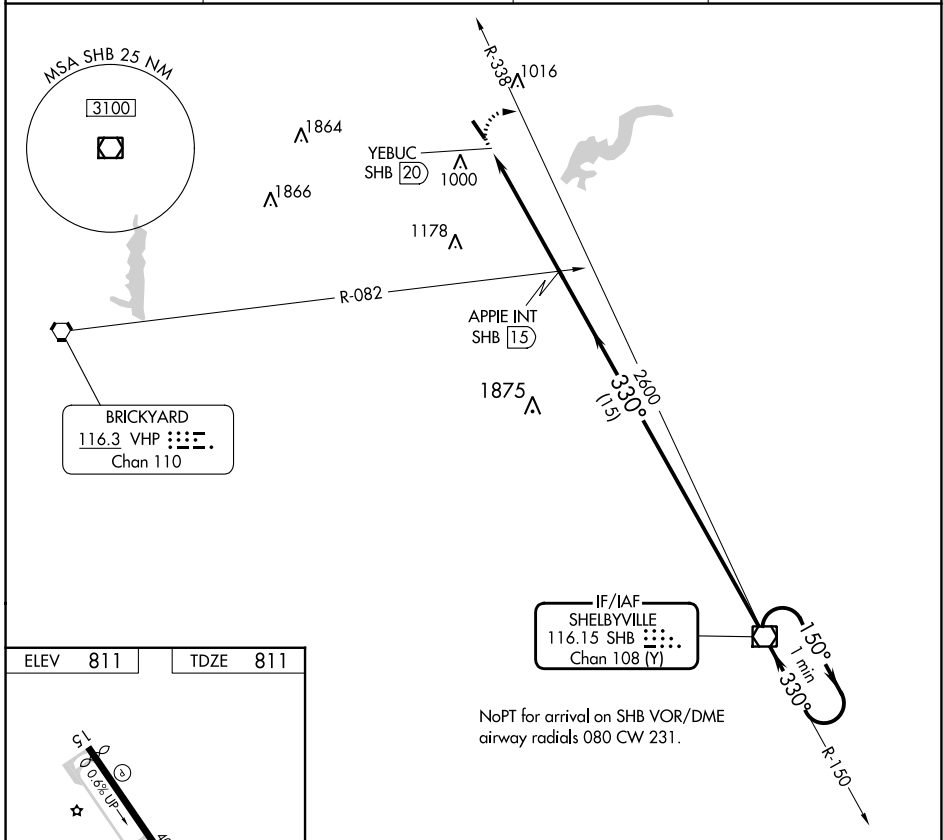
# VOR RWY 33

INDIANAPOLIS METRO (UMP)

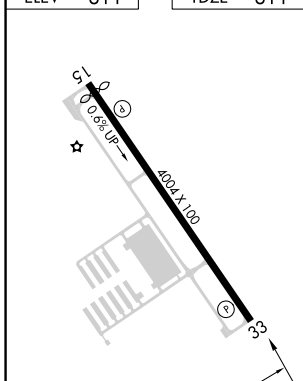
**NA** When local altimeter setting not received, use Indianapolis Intl altimeter setting and increase all MDA 60 feet, increase S-33 and Circling Cat C visibility to 1¾. Rwy 33 helicopter visibility reduction below ¾ SM NA.

**MISSED APPROACH:** Climbing right turn to 2600 on SHB VOR/DME R-338 direct SHB VOR/DME and hold.

AWOS-3PT <b>119.375</b>	INDIANAPOLIS APP CON <b>127.15 317.8</b>	CLNC DEL <b>121.625</b>	UNICOM <b>123.0</b> (CTAF) <b>1</b>
----------------------------	---	----------------------------	--



ELEV <b>811</b>	TDZE <b>811</b>
-----------------	-----------------



MIRL Rwy 15-33 **1**  
REL Rwys 15 and 33 **1**

FAF to MAP 5 NM

Knots	60	90	120	150	180
Min:Sec	5:00	3:20	2:30	2:00	1:40

2600	SHB	APPIE INT SHB (15)	SHB VOR/DME	One Minute Holding Pattern
SHB R-338				
YEBUC SHB (20)	330°	2600	150°	2600
	330°		330°	
VGSI and descent angles not coincident (VGSI Angle 3.50/TCH 27).				
	0.5	5 NM	15 NM	
CATEGORY	A	B	C	D
S-33	1340-1	529 (600-1)	1340-1½ 529 (600-1½)	NA
<b>CIRCLING</b>	1340-1	529 (600-1)	1340-1½ 529 (600-1½)	NA

EC-2, 31 OCT 2024 to 28 NOV 2024

EC-2, 31 OCT 2024 to 28 NOV 2024