

| | | |
|--|------------------------|---|
| WAAS CH 40145 W32A | APP CRS 315° | Rwy Idg 4000 TDZE 1392 Apt Elev 1402 |
|--|------------------------|---|

RNAV (GPS) RWY 32

GREENVILLE MUNI (3B1)

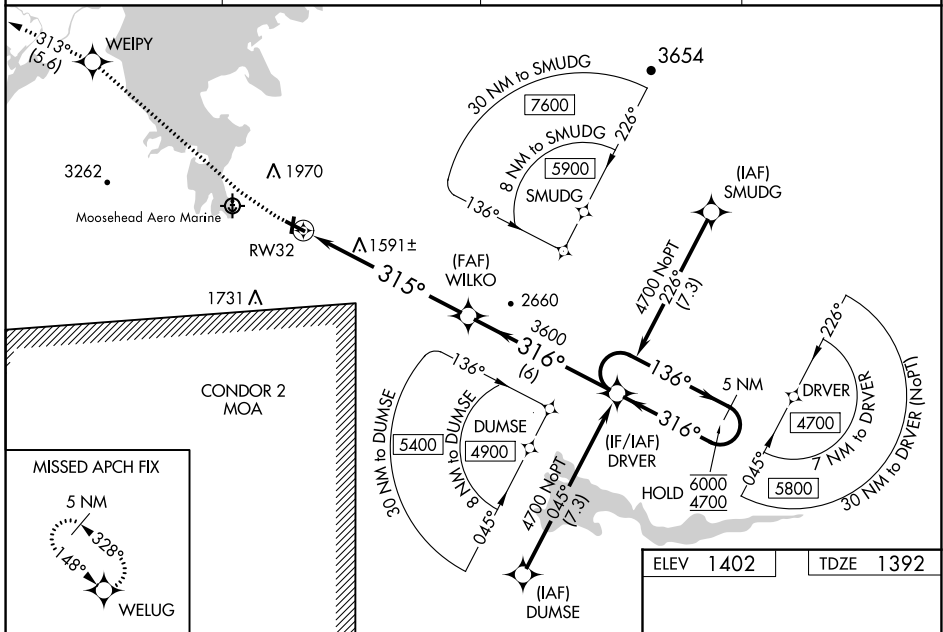
RNP APCH - GPS.

NA
-18°C

Circling Rwy 3, 21 NA at night. Baro-VNAV and VDP NA when using Bangor altimeter setting. Rwy 32 helicopter visibility reduction below 3/4 SM NA. For uncompensated Baro-VNAV systems, LNAV/VNAV NA below -23°C or above 54°C. When local altimeter not received, use Bangor altimeter setting: increase LPV DA to 1927 feet and all visibilities 1/2 SM, increase LNAV/VNAV DA to 2095 feet and all visibilities 2/3 SM; increase all MDAs 300 feet and LNAV visibilities Cat A/B 1/4 SM and Cat C/D 1/2 SM, and Circling visibility Cat A/B 1/4 SM.

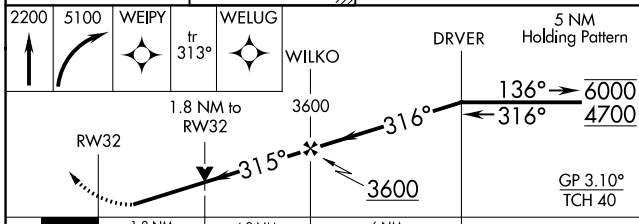
MISSED APPROACH: Climb to 2200 then climbing right turn to 5100 direct WEIPY and on track 313° to WELUG and hold, continue climb-in-hold to 5100.

| | | | |
|--------------------------|--------------------------------------|--------------------------|--|
| AWOS-A 124.175 | BOSTON CENTER 120.25 346.4 | CLNC DEL 122.3 | UNICOM 122.8 (CTAF) 📻 |
|--------------------------|--------------------------------------|--------------------------|--|

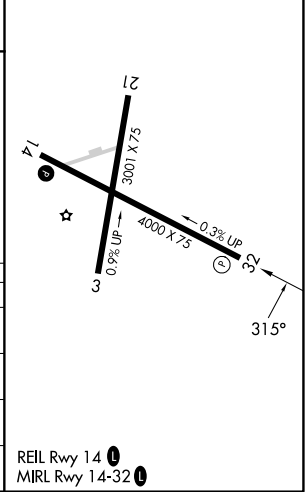


NE-1, 31 OCT 2024 to 28 NOV 2024

NE-1, 31 OCT 2024 to 28 NOV 2024



| | |
|-----------|-----------|
| ELEV 1402 | TDZE 1392 |
|-----------|-----------|



| CATEGORY | A | B | C | D |
|--------------|-----------------------|-------------------------------|-------------------------|-------------------------|
| LPV DA | | 1642-1 | 250 (300-1) | |
| LNAV/VNAV DA | | 1810-1 1/8 | 418 (500-1 1/2) | |
| LNAV MDA | 2000-1 | 608 (600-1) | 2000-1 3/4 | 608 (600-1 3/4) |
| CIRCLING | 2040-1 638 (700-1) | 2300-1 1/4 898 (900-1 1/4) | 2440-3 1038 (1100-3) | 2660-3 1258 (1300-3) |

REIL Rwy 14 **📻**
MIRL Rwy 14-32 **📻**