

WAAS CH 72706 W31A	APP CRS 313°	Rwy Idg TDZE Apt Elev	5118 807 808
---------------------------------	------------------------	-----------------------------	---

RNAV (GPS) RWY 31

ATLANTA RGNL FALCON FLD (F'F'C)

RNP APCH.

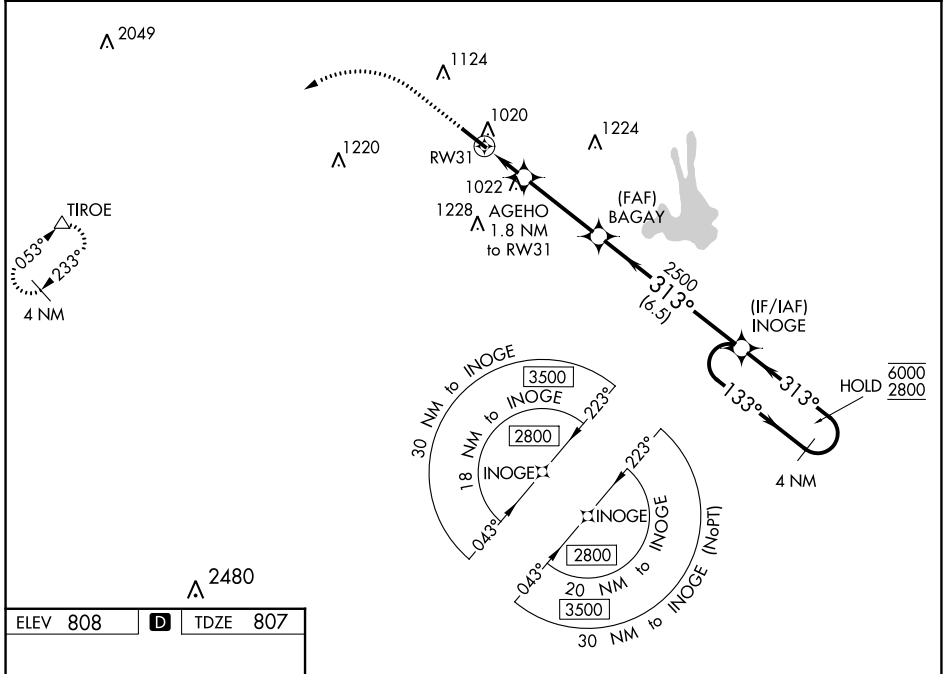
⚠ Circling Rwy 13 NA at night. Rwy 31 helicopter visibility reduction below ¼ SM NA. Inop table does not apply to LPV. For inop ALS, increase LNAV/VNAV Cat A/B visibility to 1½ SM. For uncompensated Baro-VNAV systems, LNAV/VNAV NA below -7°C or above 54°C.

ODALS

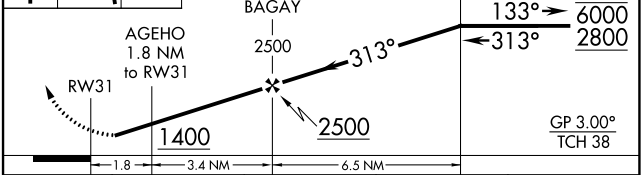
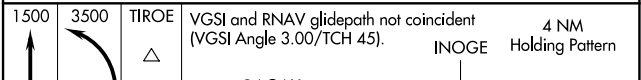
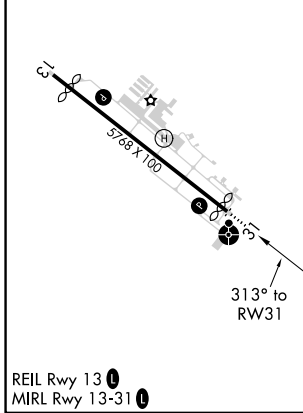


MISSED APPROACH: Climb to 1500 then climbing left turn to 3500 direct TIR0E and hold.

ASOS 118.525	ATLANTA APP CON 119.8 354.125	CLNC DEL 119.8	UNICOM 123.05 (CTAF) 0
------------------------	---	--------------------------	----------------------------------



ELEV 808	D	TDZE 807
----------	----------	----------



CATEGORY	A	B	C	D
LPV DA		1059-¾	252 (300-¾)	
LNAV/VNAV DA		1188-1	381 (400-1)	
LNAV MDA	1280-¾	473 (500-¾)	1280-1¼	473 (500-1¼)
C CIRCLING	1320-1	512 (600-1)	1440-1¾ 632 (700-1¾)	1540-2¼ 732 (800-2¼)

SE-4, 31 OCT 2024 to 28 NOV 2024

SE-4, 31 OCT 2024 to 28 NOV 2024