

VENICE, FLORIDA

AL-5960 (FAA)

23278

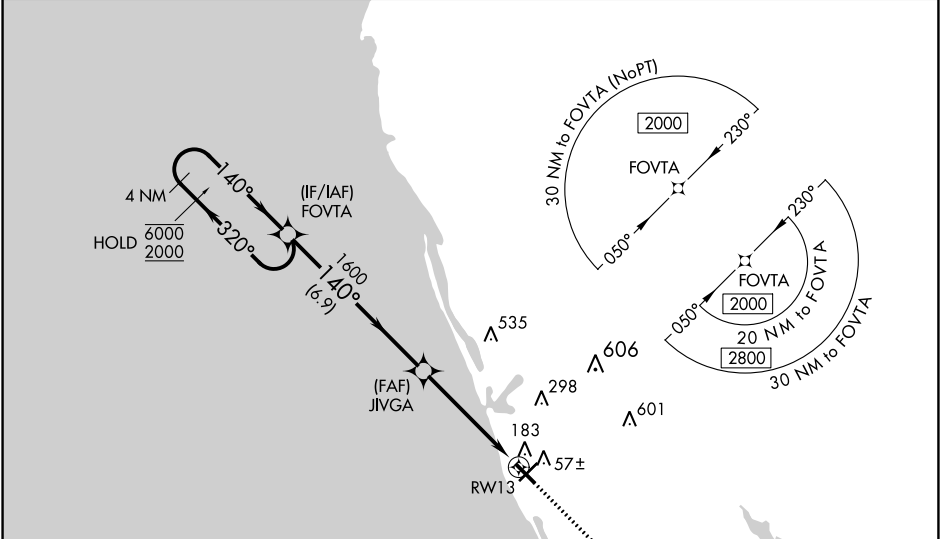
WAAS CH <b>86423</b>	APP CRS <b>140°</b>	Rwy Idg TDZE Apt Elev	<b>5000</b> <b>17</b> <b>18</b>
<b>W13A</b>			

# RNAV (GPS) RWY 13

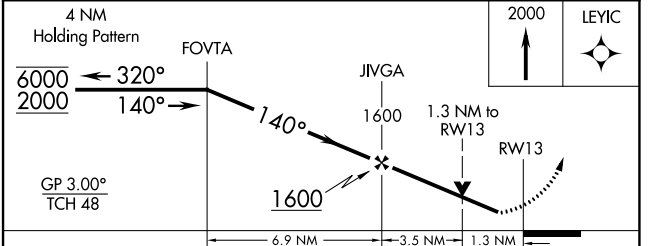
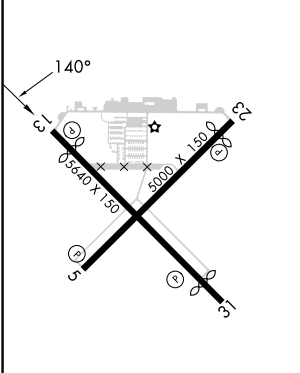
VENICE MUNI (VNC)

RNP APCH - GPS.		MISSED APPROACH: Climb to 2000 direct LEYIC and hold.	
<p><b>⚠</b> Rwy 13 helicopter visibility reduction below 3/4 SM NA.  <b>⚠</b> For uncompensated Baro-VNAV systems, LNAV/VNAV NA below -15°C or above 54°C.</p>			

AWOS-3 <b>119.275</b>	TAMPA APP CON <b>119.65 353.575</b>	CLNC DEL <b>118.075</b>	UNICOM <b>122.725 (CTAF) 0</b>
--------------------------	--	----------------------------	-----------------------------------



ELEV 18	<b>D</b>	TDZE 17
---------	----------	---------



CATEGORY	A	B	C	D
LPV DA		267-1	250 (300-1)	
LNAV/VNAV DA		364-1	347 (400-1)	
LNAV MDA	460-1	443 (500-1)	460-1 3/8	443 (500-1 1/8)
CIRCLING	500-1	482 (500-1)	680-1 3/4 662 (700-1 3/4)	920-3 902 (1000-3)

MIRL Rwy 5-23 and 13-31 **0**  
 REIL Rwy 5, 13 and 23 **0**  
 REIL Rwy 31

VENICE, FLORIDA  
 Amdt 2A 05OCT23

27°04'N-82°26'W

# RNAV (GPS) RWY 13

SE-3, 31 OCT 2024 to 28 NOV 2024