

TIDES ONE DEPARTURE (RNAV)

TAMPA DEP CON
119.65 353.575
AWOS-3
119.275
CLNC DEL
118.25

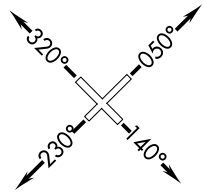
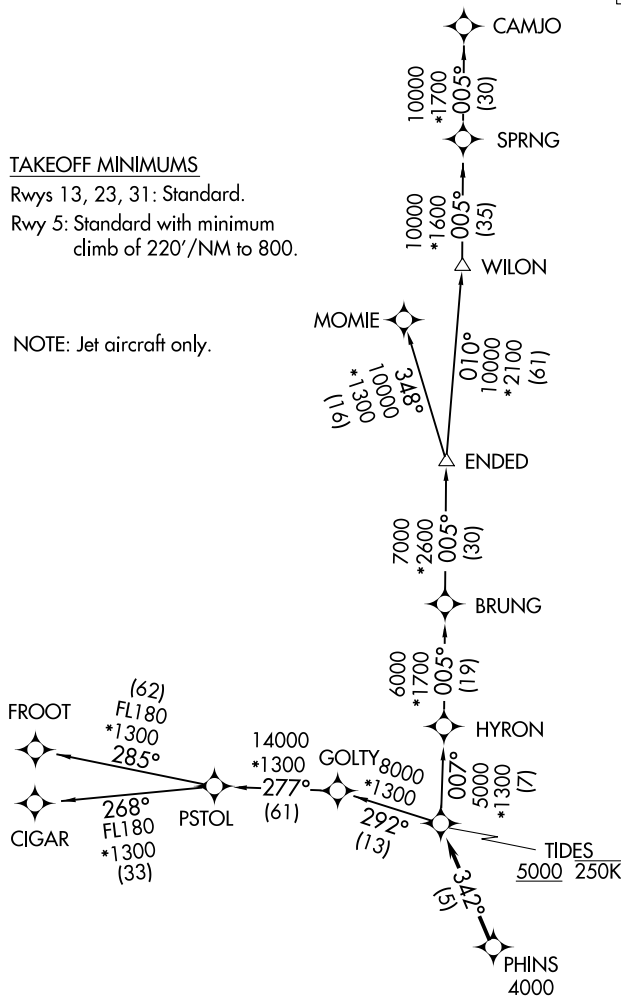
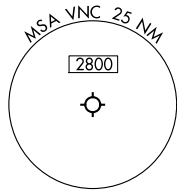
RNAV 1 - DME/DME/IRU or GPS. From PSTOL - GPS.
RADAR required for non-GPS equipped aircraft.

**TOP ALTITUDE:
ASSIGNED BY ATC.**

TAKEOFF MINIMUMS

Rwys 13, 23, 31: Standard.
Rwy 5: Standard with minimum
climb of 220' /NM to 800.

NOTE: Jet aircraft only.



NOTE: Chart not to scale.

(CONTINUED ON FOLLOWING PAGE)

SE-3, 31 OCT 2024 to 28 NOV 2024

SE-3, 31 OCT 2024 to 28 NOV 2024

TIDES ONE DEPARTURE (RNAV)

(TIDES1.TIDES) 16MAY24

VENICE, FLORIDA
VENICE MUNI (VNC)