

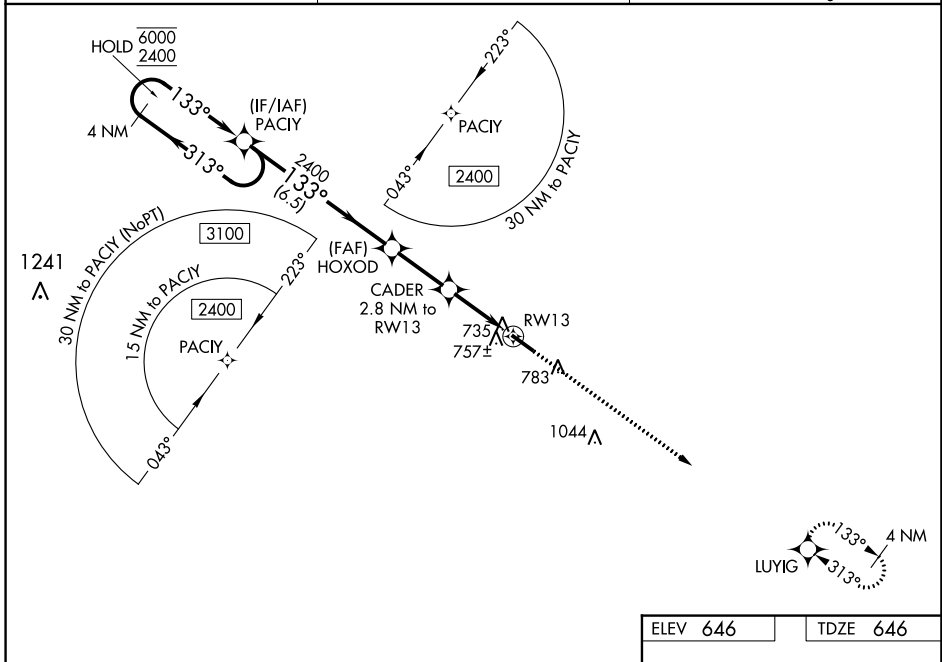
WAAS CH 62809 W13A	APP CRS 133°	Rwy Idg 5020 TDZE 646 Apt Elev 646
--	------------------------	---

RNAV (GPS) RWY 13

WASHINGTON/WILKES COUNTY (IIY)

RNP APCH-GPS.	MISSED APPROACH: Climb to 2400 direct LUYIG and hold.
Rwy 13 helicopter visibility reduction below 3/4 SM NA. For uncompensated Baro-VNAV systems, LNAV/VNAV NA below -16°C or above 54°C.	

AWOS-3 118.375	AUGUSTA APP CON* 126.8 270.3	UNICOM 122.7 (CTAF) 0
--------------------------	--	---------------------------------



SE-4, 31 OCT 2024 to 28 NOV 2024

SE-4, 31 OCT 2024 to 28 NOV 2024

4 NM Holding Pattern	PACY	HOXOD	CADER 2.8 NM to RWY13	RWY13	LUYIG
6000 2400	313°	133°	2400	1600	2400
GP 3.00° TCH 52			1.1 NM to RWY13	1.1	
	6.5 NM	2.5 NM	1.7 NM	1.1	
CATEGORY	A	B	C	D	
LPV DA	958-7/8	312 (400-7/8)		NA	
LNAV/ VNAV DA	907-7/8	261 (300-7/8)		NA	
LNAV MDA	1020-1	374 (400-1)		NA	
CIRCLING	1080-1 434 (500-1)	1100-1 454 (500-1)	1100-1 1/2 454 (500-1 1/2)	NA	

