

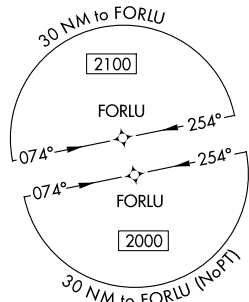
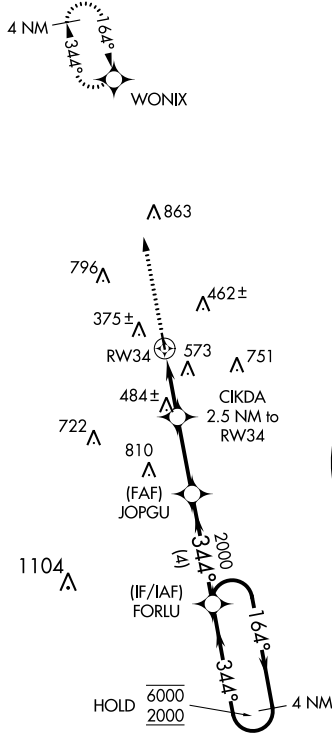
WAAS CH <b>93925</b> <b>W34A</b>	APP CRS <b>344°</b>	Rwy Idg <b>3218</b> TDZE <b>288</b> Apt Elev <b>289</b>
--	------------------------	---

# RNAV (GPS) RWY 34

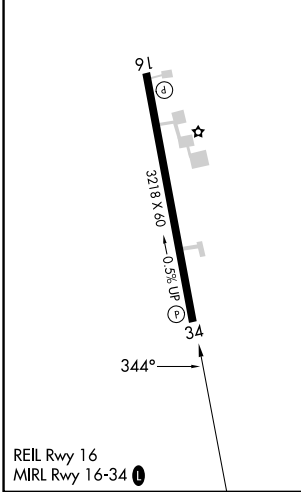
KENEDY RGNL (2R.9)

RNP APCH.	Procedure NA at night. Rwy 34 helicopter visibility reduction below 1 SM NA. When local altimeter setting not received, use Pleasanton altimeter setting.	MISSED APPROACH: Climb to 2000 direct WONIX and hold.
-----------	---	---

AWOS 3-PT <b>118.45</b>	HOUSTON CENTER <b>134.6 322.5</b>	UNICOM <b>123.0 (CTAF) 0</b>
----------------------------	--------------------------------------	---------------------------------



ELEV 289	TDZE 288
----------	----------



2000	WONIX	Visual Segment - Obstacles.		4 NM Holding Pattern
		JOPGU	FORLU	
		CIKDA 2.5 NM to RW34		
		1100	344°	164° → 6000
		2000	← 344°	2000
		2.5 NM	2.8 NM	4 NM
CATEGORY	A	B	C	D
LP MDA	840-1	552 (600-1)		NA
LNAV MDA	900-1	612 (700-1)		NA

SC-3, 31 OCT 2024 to 28 NOV 2024

SC-3, 31 OCT 2024 to 28 NOV 2024