

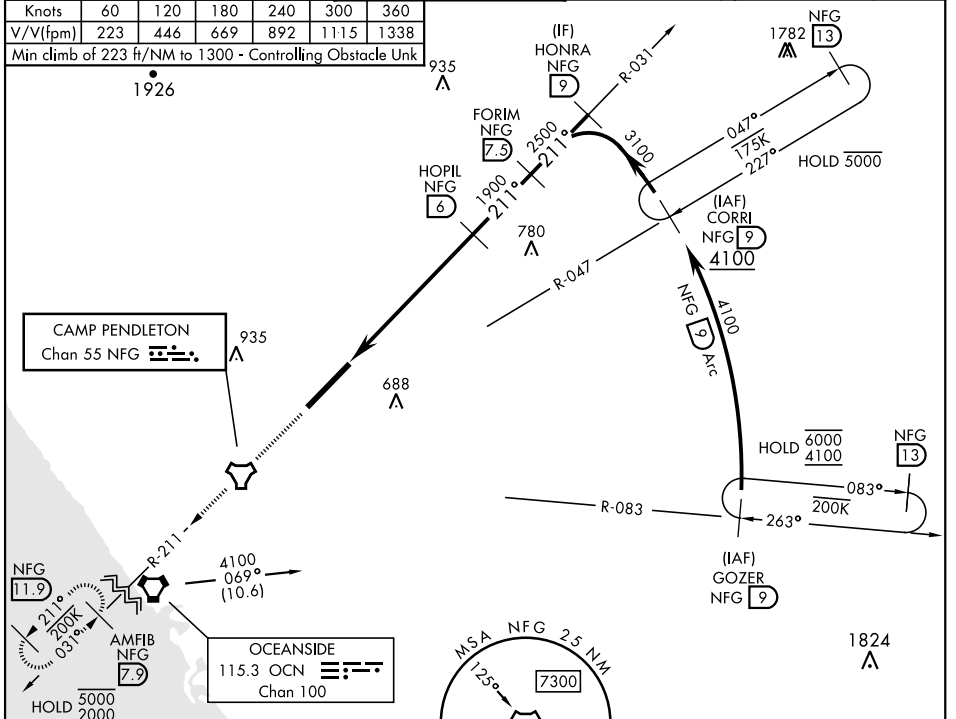
# COPTER TACAN RWY 21

TACAN NFG Chan <b>55</b>	APCH CRS <b>211°</b>	Rwy ldg TDZE Arpt Elev <b>6005</b> <b>78</b> <b>78</b>	[USN]	CAMP PENDLETON MCAS (MUNN FLD) (KNFG)
-----------------------------	-------------------------	---	-------	---------------------------------------

▼ \* When ALS inop, increase vis to 1 mile.  
Visibility reduction by helicopters not authorized.

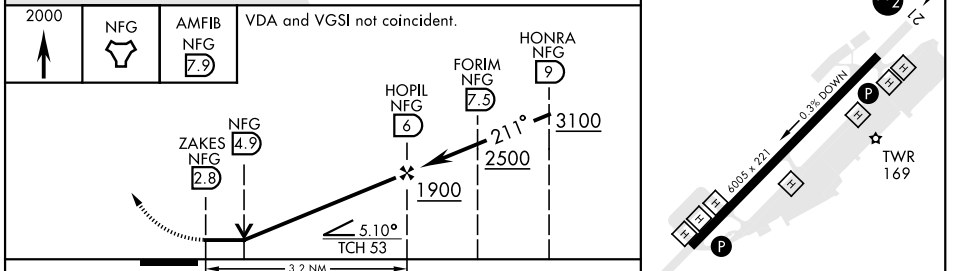
SALSF
MISSED APPROACH: Climb to 2000 direct NFG TACAN then direct AMFIB and hold.

ATIS ★ <b>285.45</b>	SOCAL APP CON <b>127.3 323.0</b>	TOWER ★ <b>128.775 0 340.2</b>	GND CON <b>134.675 360.2</b>	CLNC DEL <b>134.675 271.6</b>	ASR/ PAR
-------------------------	-------------------------------------	-----------------------------------	---------------------------------	----------------------------------	-------------



ELEV	78	TDZE	78
------	----	------	----

EMERG SAFE ALT 100 NM 13,600



CATEGORY	COPTER	
H-21*	940- $\frac{3}{4}$	862 (900- $\frac{3}{4}$ )
CIRCLING	NOT AUTHORIZED	

⬇ HIRL Rwy 3-21

OCEANSIDE, CALIFORNIA      33°18'N-117°21'W      CAMP PENDLETON MCAS (MUNN FLD) (KNFG)

# COPTER TACAN RWY 21

SW-3, 31 OCT 2024 to 28 NOV 2024

SW-3, 31 OCT 2024 to 28 NOV 2024