

TACAN Z RWY 21

TACAN NFG Chan 55	APCH CRS 211°	Rwy ldg TDZE Arpt Elev 6005 78 78
-----------------------------	-------------------------	---

[USN]

CAMP PENDLETON MCAS (MUNN FLD) (KNFG)

▼ * When ALS inop, increase CAT A vis to 1 mile, CAT B to 1½ miles.
 ** Circling Rwy 3 not authorized at night when VGSI inop.
 Visibility reduction by helicopters not authorized.

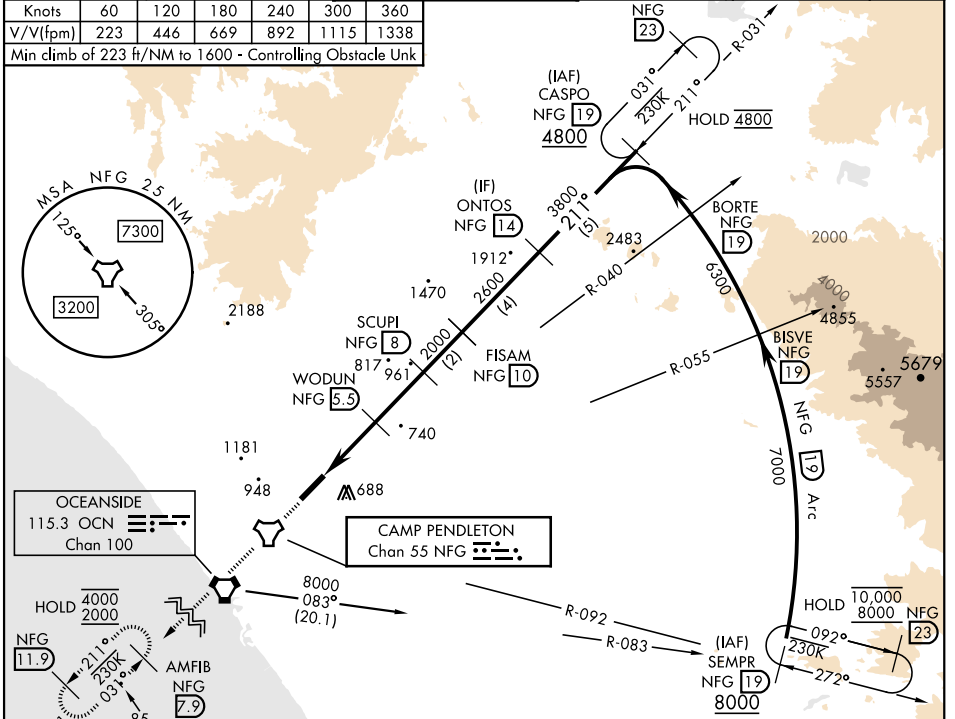


MISSED APPROACH: Climb to 2000 direct
 NFG TACAN then direct AMFIB and hold.

ATIS ★ 285.45	SOCAL APP CON 127.3 323.0	TOWER ★ 128.775 0 340.2	GND CON 134.675 360.2	CLNC DEL 134.675 271.6	ASR/PAR
-------------------------	-------------------------------------	-----------------------------------	---------------------------------	----------------------------------	---------

Knots	60	120	180	240	300	360
V/V(fpm)	223	446	669	892	1115	1338

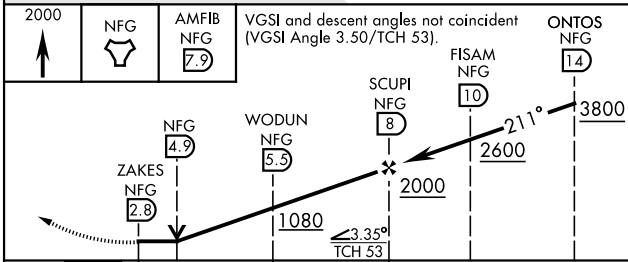
Min climb of 223 ft/NM to 1600 - Controlling Obstacle Unk



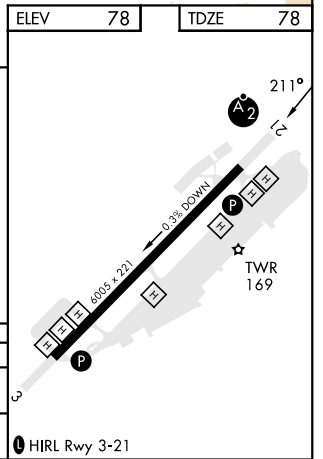
OCEANSIDE
 115.3 OCN
 Chan 100

CAMP PENDLETON
 Chan 55 NFG

EMERG SAFE ALT 100 NM 13,600



CATEGORY	A	B	C	D
S-21*	940-¾ 862 (900-¾)	940-1 862 (900-1)	940-2½ 862 (900-2½)	
CIRCLING**	1000-1¼ 922 (1000-1¼)	1260-1½ 1182 (1200-1½)	1500-3 1422 (1500-3)	



OCEANSIDE, CALIFORNIA 33° 18'N-117° 21'W CAMP PENDLETON MCAS (MUNN FLD) (KNFG)

Amdt 6 02DEC21

TACAN Z RWY 21

SW-3, 31 OCT 2024 to 28 NOV 2024

SW-3, 31 OCT 2024 to 28 NOV 2024