

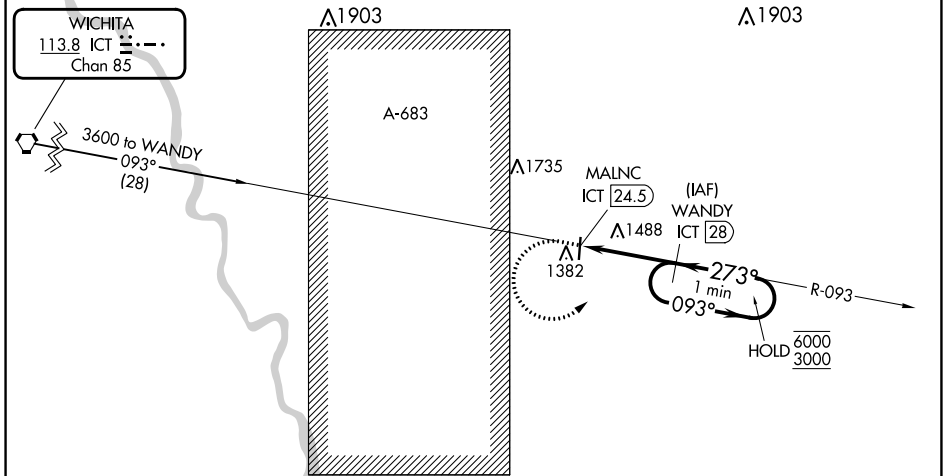
VORTAC ICT 113.8 Chan 85	APP CRS 273°	Rwy Idg TDZE Apt Elev 1326	N/A N/A
--	------------------------	--	--------------------------

VOR-A
AUGUSTA MUNI (3AU)

DME required.	MISSED APPROACH: Climb to 1900 then climbing left turn to 3000 on heading 050° and on ICT VORTAC R-093 to WANDY/28 DME and hold, continue climb-in-hold to 3000.
<p>▼ When local altimeter setting not received, use AAO</p> <p>▲ altimeter setting and increase all MDAs 40 feet.</p>	

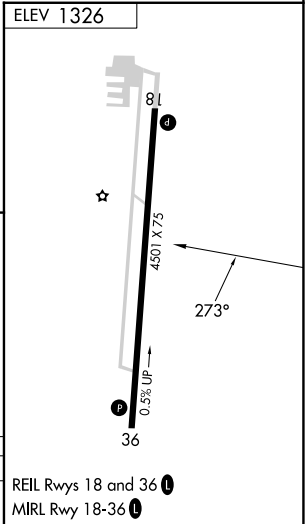
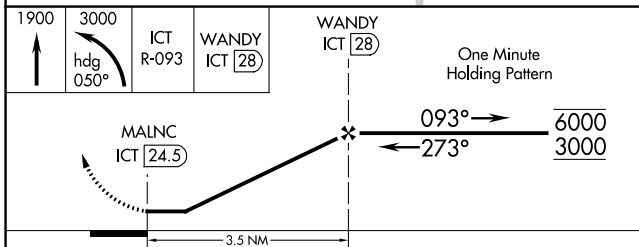
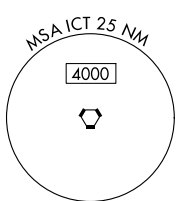
AWOS-3P 124.175	WICHITA APP CON 134.8 269.1	CLNC DEL 125.0	UNICOM 122.8 (CTAF)
---------------------------	---------------------------------------	--------------------------	-------------------------------

Procedure NA for arrival on ICT VORTAC airway radials 033 CW 153.



NC-2, 31 OCT 2024 to 28 NOV 2024

NC-2, 31 OCT 2024 to 28 NOV 2024



CATEGORY	A	B	C	D
CIRCLING	1800-1 474 (500-1)	1820-1 494 (500-1)	1820-1½ 494 (500-1½)	NA