

APP CRS	Rwy Idg	<b>5000</b>
<b>359°</b>	TDZE	<b>1321</b>
	Apt Elev	<b>1321</b>

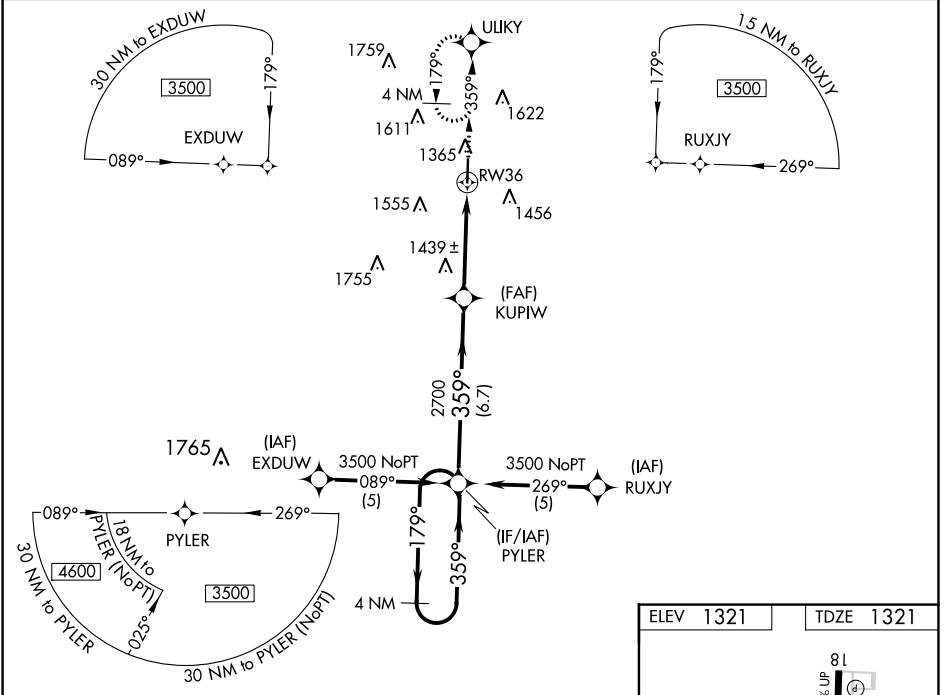
# RNAV (GPS) RWY 36

FLOYD W JONES LEBANON (LBO)

When local altimeter setting not received, use Springfield-Branson Nil altimeter setting: increase LNAV/VNAV DA to 1786 feet and all visibilities 1/8 SM; increase all MDAs 120 feet and LNAV visibility Cat C 3/8 SM, Cat D 1/8 and Circling visibility Cat C/D 1/2 SM. Baro-VNAV NA when using Springfield-Branson Nil altimeter setting. Baro-VNAV NA below -17° C (1° F). DME/DME RNP-0.3 NA.

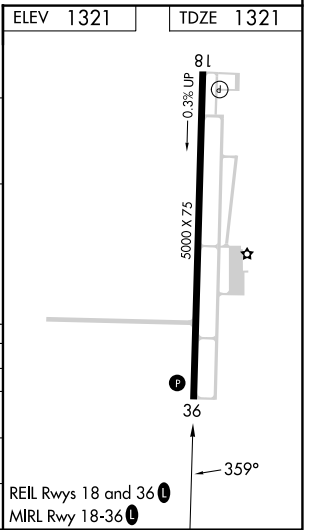
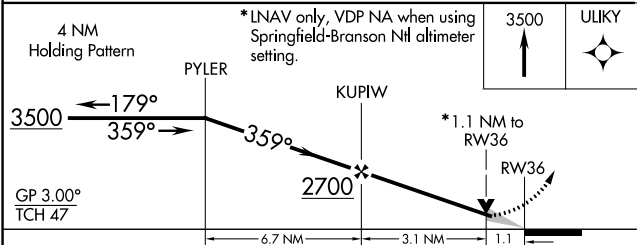
**MISSED APPROACH:** Climb to 3500 direct ULIKY and hold.

AWOS-3PT <b>118.975</b>	SPRINGFIELD APP CON <b>121.1 290.5</b>	CLNC DEL <b>123.725</b>	UNICOM <b>122.8 (CTAF) 0</b>
----------------------------	---	----------------------------	---------------------------------



NC-3, 31 OCT 2024 to 28 NOV 2024

NC-3, 31 OCT 2024 to 28 NOV 2024



CATEGORY	A	B	C	D
GLS PA DA	NA			
LNAV/VNAV DA	1680-1 1/4 359 (400-1 1/4)			
LNAV MDA	1700-1 379 (400-1)		1700-1 1/4 379 (400-1 1/4)	
CIRCLING	1820-1 499 (500-1)	1860-1 539 (600-1)	1980-1 3/4 659 (700-1 3/4)	1980-2 659 (700-2)