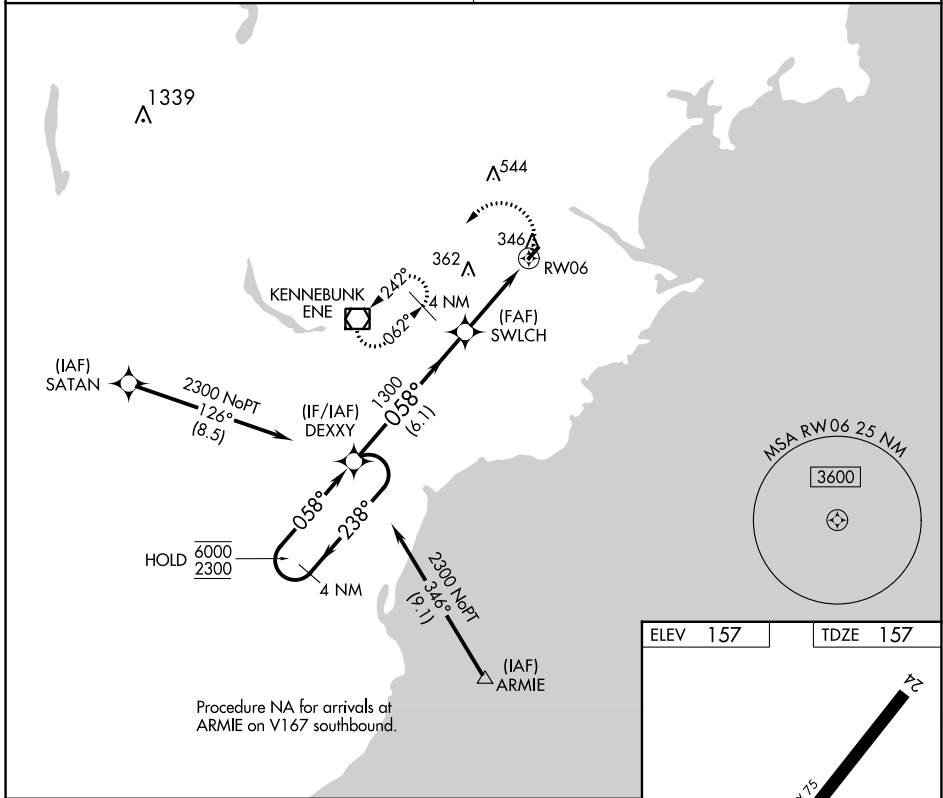


APP CRS	Rwy Idg	3000
058°	TDZE	157
	Apt Elev	157

RNAV (GPS) RWY 6

BIDDEFORD MUNI (B19)

RNP APCH.		MISSED APPROACH: Climbing left turn to 3000 direct ENE VOR/DME and hold, continue climb-in-hold to 3000.
▼ Rwy 6 helicopter visibility reduction below 3/4 SM NA. Obtain local altimeter setting on CTAF; when not received use Sanford altimeter setting and increase all MDA 40 feet and LNAV visibility Cat C 1/8 SM, and Circling visibility Cat C 1/4 SM. VDP NA when using Sanford altimeter setting. Circling Rwy 24 NA at night. ▲ NA	PORTLAND APP CON ★ 119.75 269.35	



NE-1, 31 OCT 2024 to 28 NOV 2024

NE-1, 31 OCT 2024 to 28 NOV 2024

ELEV 157	TDZE 157
----------	----------

REIL Rwy 6 1
MRL Rwy 6-24 1

4 NM Holding Pattern	DEXXY	SWLCH	RWY 06
6000 2300	238°	058°	1300
VGSi and descent angles not coincident (VGSi Angle 3.50/TCH 31).		3.03° TCH 31	1.4 NM to RWY 06
6.1 NM		2.1 NM	1.4 NM

CATEGORY	A	B	C	D
LNAV MDA	680-1	523 (600-1)	680-1½ 523 (600-1½)	NA
CIRCLING	780-1	623 (700-1)	800-1¾ 643 (700-1¾)	NA