

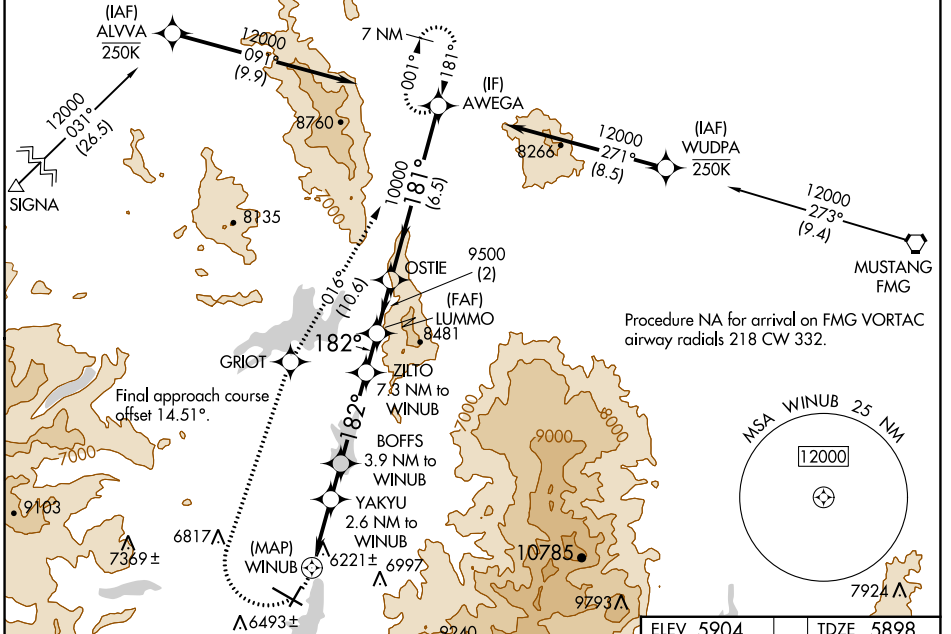
WAAS CH <b>87135</b> <b>W20A</b>	APP CRS <b>182°</b>	Rwy Idg TDZE Apt Elev	<b>4539</b> <b>5898</b> <b>5904</b>
--	------------------------	-----------------------------	---

# RNAV (GPS) RWY 20

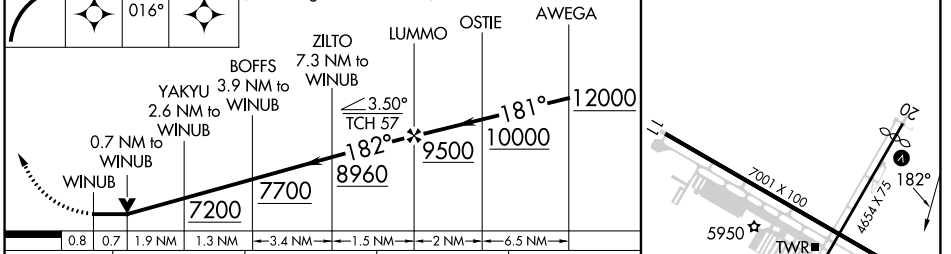
TRUCKEE-TAHOE (TRK)

RNP APCH.	MISSED APPROACH: (Do not exceed 200K until GRIOT) Climbing right turn to 12000 direct GRIOT and on track 016° to AWEGA and hold, continue climb-in-hold to 12000. *Missed approach requires minimum climb of 270 feet per NM to 7700.
<p><b>⚠</b> Circling to Rwy 2, 11, 29 NA at night. Circling NA for Cat C south of Rwy 29 and east of Rwy 2. Rwy 20 helicopter visibility reduction below ¾ SM NA. When local altimeter setting not received, procedure NA.</p> <p><b>❄</b> -18°C</p>	

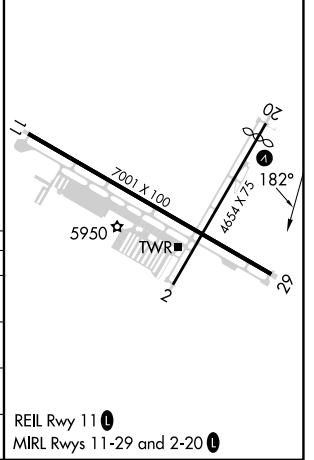
D-ATIS <b>118.0</b>	OAKLAND CENTER <b>127.95 316.1</b>	<b>TRUCKEE TOWER *</b> <b>120.575</b> (CTAF) <b>0</b>	GND CON <b>118.3</b>	UNICOM <b>122.95</b>
------------------------	---------------------------------------	--	-------------------------	-------------------------



12000 GRIOT	AWEGA	VGSI and descent angles not coincident (VGSI Angle 3.50/TCH 25).	ELEV 5904	TDZE 5898
-------------	-------	--	-----------	-----------



CATEGORY	A	B	C	D
LP MDA*	6480-1	582 (600-1)	6480-1¼ 582 (600-1¼)	NA
LP MDA	6780-1¼	882 (900-1¼)	6780-2½ 882 (900-2½)	NA
LNAV MDA	7120-1¼ 1222 (1300-1¼)	7120-1½ 1222 (1300-1½)	7120-3 1222 (1300-3)	NA
<b>C</b> CIRCLING	7120-1¼ 1216 (1300-1¼)	7220-1½ 1316 (1400-1½)	7700-3 1796 (1800-3)	NA



SW-2, 31 OCT 2024 to 28 NOV 2024

SW-2, 31 OCT 2024 to 28 NOV 2024