

WAAS CH 82041 W10A	APP CRS 096°	Rwy Idg TDZE Apt Elev	4201 1089 1090
--	------------------------	-----------------------------	---

RNAV (GPS) RWY 10

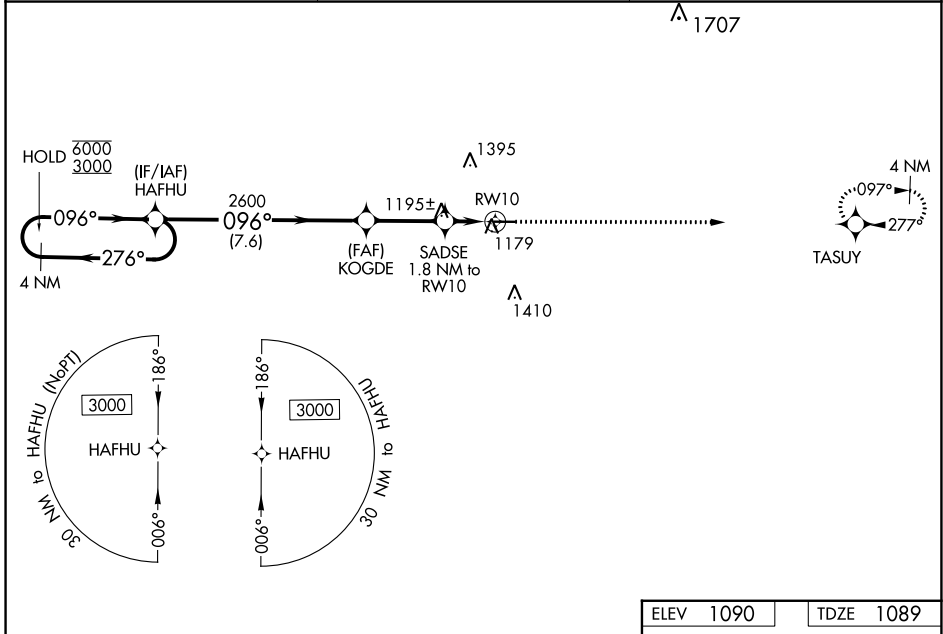
NEW CASTLE HENRY COUNTY MARLATT FLD (UWL)

RNP APCH - GPS.

⚠ Rwy 10 helicopter visibility reduction below $\frac{3}{4}$ SM NA. For uncompensated Baro-VNAV systems, LNAV/VNAV NA below -17°C or above 54°C. Baro-VNAV and VDP NA when using AID altimeter setting. When local altimeter setting not received, use Anderson altimeter setting; increase LPV DA to 1408 feet; increase LNAV/VNAV DA to 1424 feet; increase all MDAs 80 feet, LNAV visibility Cat C/D $\frac{3}{8}$ SM, and Circling visibility Cat C/D $\frac{1}{4}$ SM.

⚠ MISSED APPROACH: Climb to 3000 direct TASUY and hold.

AWOS-3 132.375	INDIANAPOLIS APP CON 135.45 317.8	UNICOM 123.05 (CTAF) 0
--------------------------	---	----------------------------------



EC-2, 31 OCT 2024 to 28 NOV 2024

EC-2, 31 OCT 2024 to 28 NOV 2024

		ELEV 1090	TDZE 1089
4 NM Holding Pattern		VGSI and RNAV glidepath not coincident (VGSI Angle 3.00/TCH 46).	
HAFHU		3000	TASUY
6000 ← 276°		↑	
3000 → 096°		✧	
GP 3.00° TCH 46			
2600		1.1 NM to RW10	
KOGDE		RW10	
SADSE 1.8 NM to RW10			
2600		0.8 NM	
1680		1.1 NM	
7.6 NM		2.8 NM	
		0.8 NM	
		1.1 NM	
CATEGORY	A	B	C
LPV DA		1339-1	250 (300-1)
LNAV/VNAV DA		1355-1	266 (300-1)
LNAV MDA		1460-1	371 (400-1)
C CIRCLING	1520-1 430 (500-1)	1540-1 450 (500-1)	1720-1 $\frac{3}{4}$ 630 (700-1 $\frac{3}{4}$)
			1720-2 630 (700-2)
MIRL Rwy 10-28 0 REIL Rwys 10 and 28 0			