

WAAS CH 70541 W28A	APP CRS 276°	Rwy Idg TDZE Apt Elev	4201 1090 1090
--	------------------------	-----------------------------	---

RNAV (GPS) RWY 28

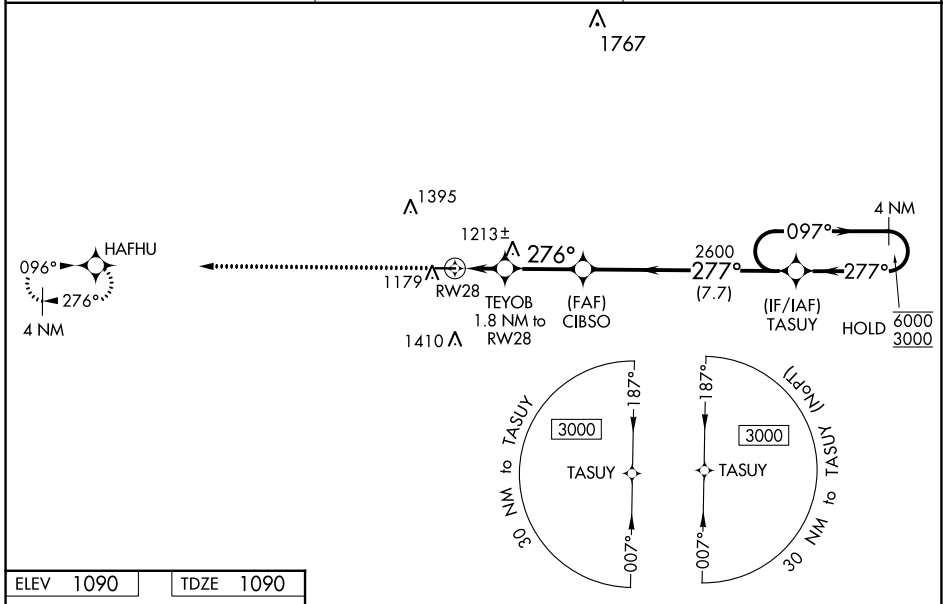
NEW CASTLE HENRY COUNTY MARLATT FLD (UWL)

RNP APCH - GPS.

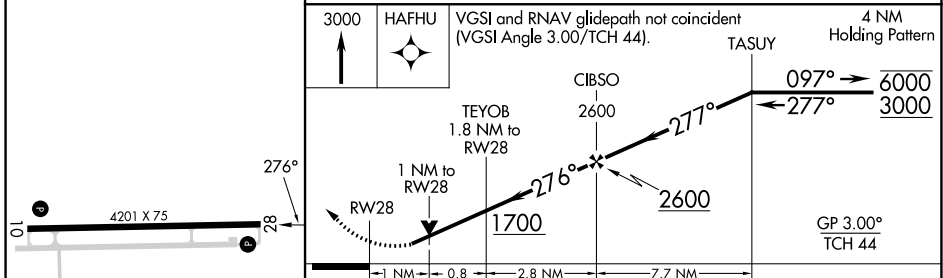
▼ Rwy 28 helicopter visibility reduction below 3/4 SM NA. For uncompensated Baro-VNAV systems, LNAV/VNAV NA below -17°C or above 54°C. Baro-VNAV and VDP NA when using AID altimeter setting. When local altimeter setting not received, use Anderson altimeter setting; increase LPV DA to 1412 feet; increase LNAV/VNAV DA to 1437 feet; increase all MDAs 80 feet, LNAV visibility Cat C/D 3/8 SM, and Circling visibility Cat C/D 1/4 SM.

▲ MISSED APPROACH: Climb to 3000 direct HAFHU and hold.

AWOS-3 132.375	INDIANAPOLIS APP CON 135.45 317.8	UNICOM 123.05 (CTAF) 0
--------------------------	---	----------------------------------



ELEV 1090	TDZE 1090
-----------	-----------



CATEGORY	A	B	C	D
LPV DA		1343-1	253 (300-1)	
LNAV/VNAV DA		1368-1	278 (300-1)	
LNAV MDA		1480-1	390 (400-1)	
C CIRCLING	1520-1 430 (500-1)	1540-1 450 (500-1)	1720-1 3/4 630 (700-1 3/4)	1720-2 630 (700-2)

MIRL Rwy 10-28 **0**
REIL Rwy 10 and 28 **0**

EC-2, 31 OCT 2024 to 28 NOV 2024

EC-2, 31 OCT 2024 to 28 NOV 2024