

WAAS CH 97630 W23A	APP CRS 234°	Rwy Idg TDZE 969 Apt Elev 977	3520
--	------------------------	---	-------------

RNAV (GPS) RWY 23

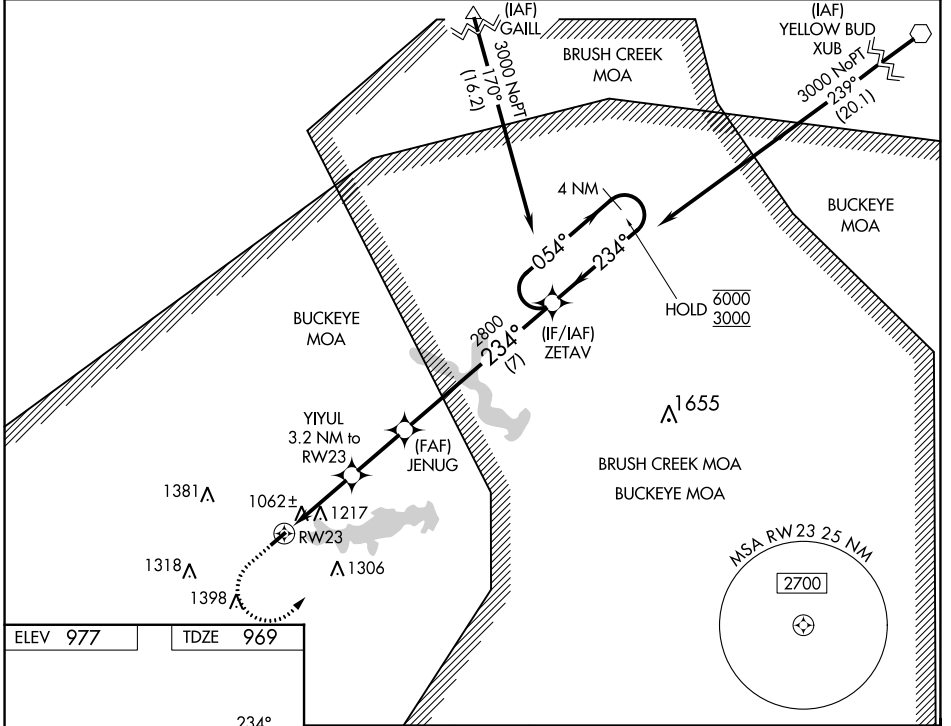
HIGHLAND COUNTY (HOC)

RNP APCH - GPS.

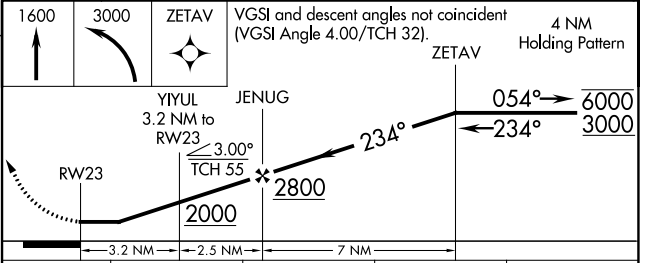
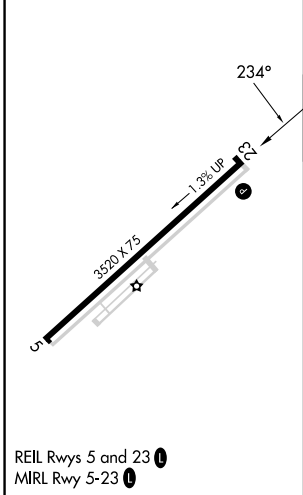
NA Procedure NA at night. Rwy 23 helicopter visibility reduction below 1 SM NA. When local altimeter setting not received, use Wilmington Air Park altimeter setting: increase all MDA 60 feet; increase LNAV Cats C and D visibility ¼ SM, increase LP Cats C and D visibility ½ SM, and increase Circling Cats C and D visibility ¼ SM.

MISSED APPROACH: Climb to 1600 then climbing left turn to 3000 direct ZETAV and hold.

AWOS-3 118.175	INDIANAPOLIS CENTER 135.575 290.5	UNICOM 123.05 (CTAF)
--------------------------	---	--------------------------------



ELEV 977	TDZE 969
-----------------	-----------------



CATEGORY	A	B	C	D
LP MDA	1320-1 351 (400-1)			
LNAV MDA	1480-1	511 (600-1)	1480-1 3/8	511 (600-1 3/8)
CIRCLING	1500-1 523 (600-1)	1520-1 543 (600-1)	1700-2 723 (800-2)	1700-2 1/4 723 (800-2 1/4)

REIL Rwy 5 and 23 **1**
MIRL Rwy 5-23 **1**

EC-2, 31 OCT 2024 to 28 NOV 2024

EC-2, 31 OCT 2024 to 28 NOV 2024