

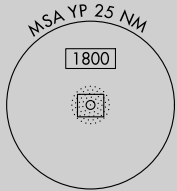
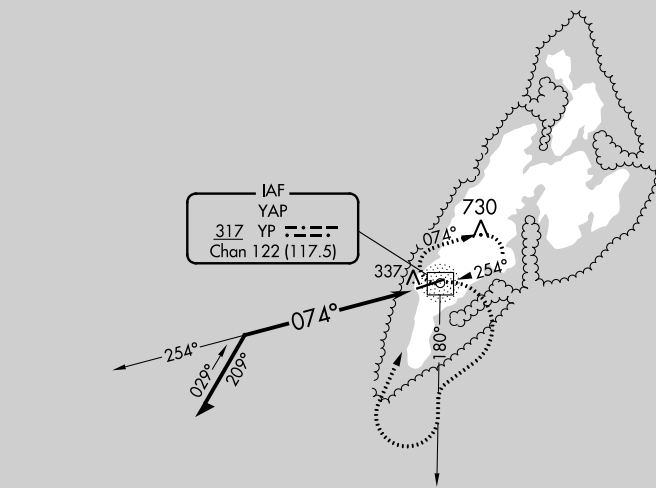
NDB/DME YP 317	APP CRS 074°	Rwy ldg TDZE Apt Elev	6000 91 91
Chan 122 (117.5)			

NDB RWY 7
YAP INTL (T11)(PTYA)

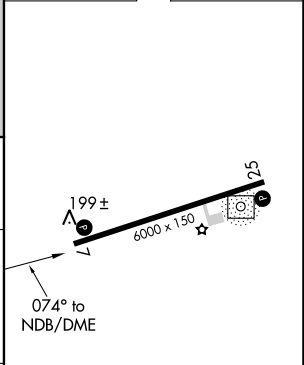
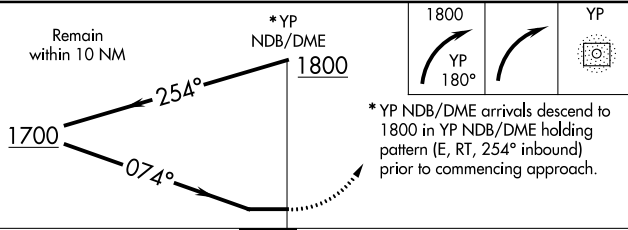
⚠ Circling NA north of Rwy 7-25.
⚠ Rwy 7 helicopter visibility reduction below 3/4 SM NA.
No controlled airspace below 5500 feet.

MISSED APPROACH: Climbing right turn to 1800 on 180° bearing from YP NDB/DME then right turn direct YP NDB/DME and hold.

YAP RADIO
123.6 (CTAF)



ELEV 91	TDZE 91
---------	---------



CATEGORY	A	B	C	D
S-7	820-1 729 (800-1)		820-2 729 (800-2)	
C CIRCLING	820-1 729 (800-1)		820-2 729 (800-2)	820-2 1/4 729 (800-2 1/4)

MIRL Rwy 7-25
REIL Rws 7 and 25

PAC, 31 OCT 2024 to 26 DEC 2024

PAC, 31 OCT 2024 to 26 DEC 2024