


LOC/DME I-DJK 109.95 Chan 36 (Y)	APP CRS 022°	Rwy Idg 7026 TDZE 913 Apt Elev 913
--	------------------------	---

ILS or LOC RWY 2

DE KALB TAYLOR MUNI (DKB)

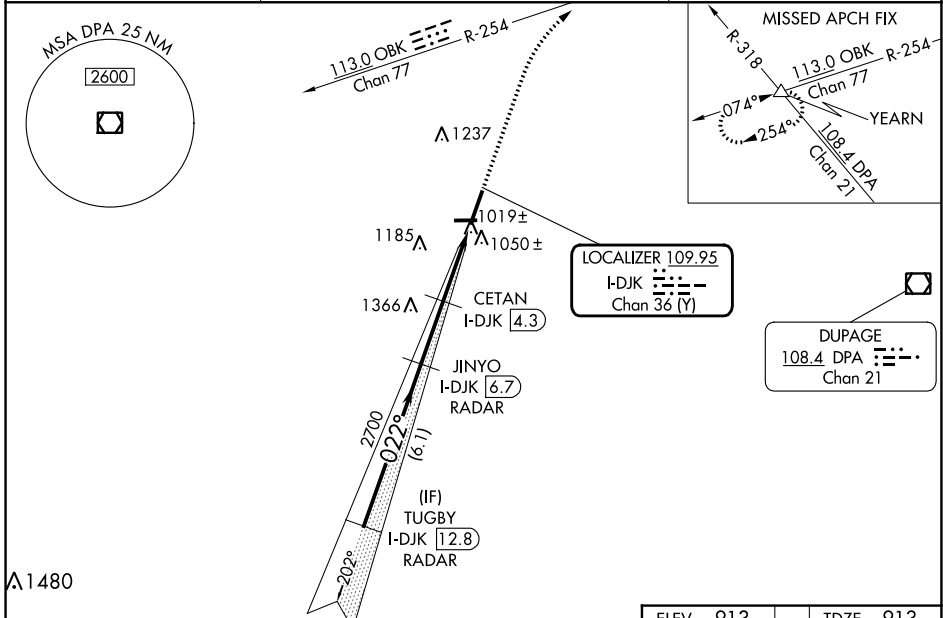
RADAR required for procedure entry. DME or RADAR required.

VDP NA with Aurora altimeter setting. When local altimeter setting not received, use Aurora altimeter setting and increase DA to 1174 feet and all MDA 80 feet; CETAN fix minimums increase Circling Cat C and D visibility 1/4 SM. For inop ALS, increase S-ILS 2 all Cats visibility to 3/8 SM. CETAN fix minimums: For inop ALS, increase S-LOC 2 Cat C and D visibility to 1 SM.

MALSRS 

MISSED APPROACH:
Climb to 3000 on heading 022° and OBK VOR/DME R-254 to YEARN Inlt and hold.

AWOS-3 119.075	CHICAGO APP CON 133.5 349.0	UNICOM 122.7 (CTAF) 0
--------------------------	---------------------------------------	--



VGSI and ILS glidepath not coincident (VGSI Angle 3.00/TCH 53).

3000
hdg 022°

OBK R-254
YEARN Δ

TUGBY I-DJK 12.8
RADAR

JINYO I-DJK 6.7
RADAR

CETAN I-DJK 4.3

2700

022°

2700

1900

I-DJK 2.4

I-DJK 1.3

GS 3.00°
TCH 55

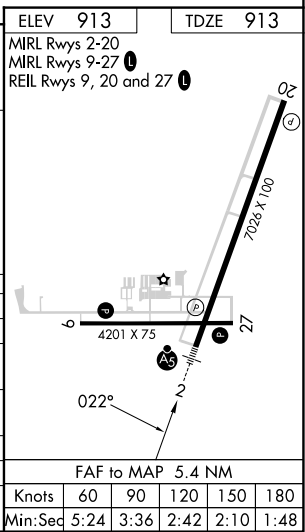
6.1 NM

2.4 NM

1.9

1.1

CATEGORY	A	B	C	D
S-ILS 2	1113-1/2		200 (200-1/2)	
S-LOC 2	1900-3/4 987 (1000-3/4)	1900-1 987 (1000-1)	1900-2 1/2	987 (1000-2 1/2)
CIRCLING	1900-1 1/4 987 (1000-1 1/4)	1900-1 1/2 987 (1000-1 1/2)	1900-3	987 (1000-3)
CETAN FIX MINIMUMS (DME REQUIRED)				
S-LOC 2	1280-1/2 367 (400-1/2)	1280-5/8		367 (400-5/8)
CIRCLING	1360-1 447 (500-1)	1500-1 587 (600-1)	1600-2 687 (700-2)	1740-2 3/4 827 (900-2 3/4)



EC-3, 31 OCT 2024 to 28 NOV 2024

EC-3, 31 OCT 2024 to 28 NOV 2024