

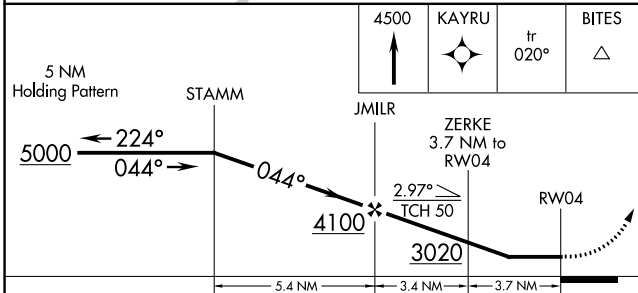
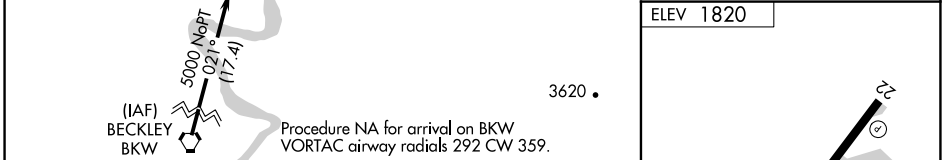
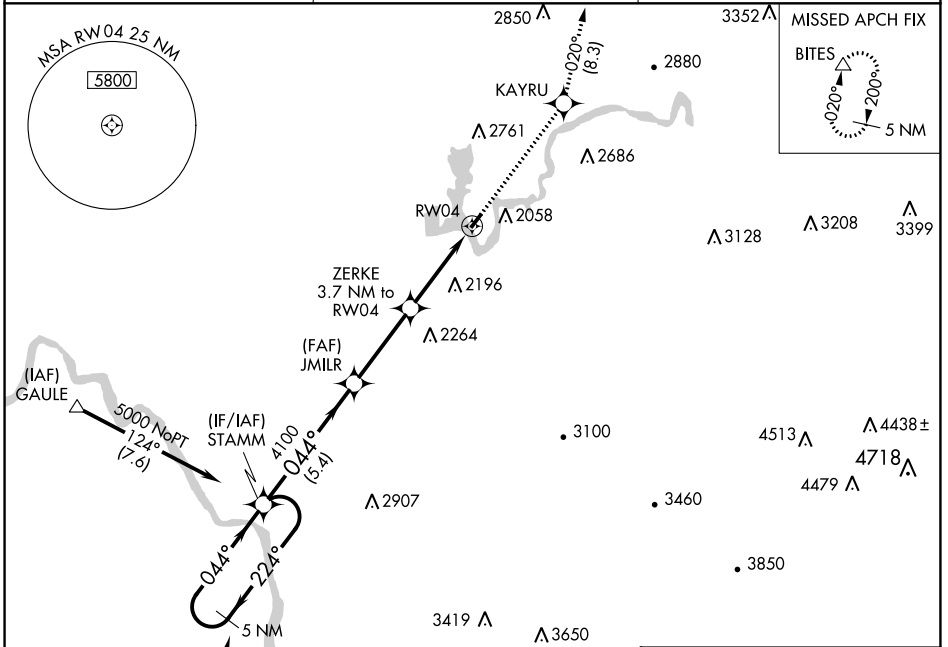
APP CRS 044°	Rwy Idg TDZE Apt Elev	NA NA 1820
------------------------	-----------------------------	---------------------------------------

RNAV (GPS)-A

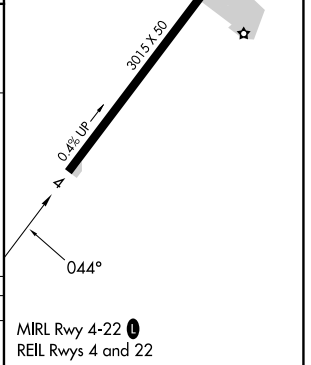
SUMMERSVILLE (SXL)

<p>NA</p> <p>Rwy 4, 22 helicopter visibility reduction below 1 SM NA. DME/DME RNP-0.3 NA. Procedure NA at night. Use Charleston altimeter setting.</p>	<p>MISSED APPROACH: Climb to 4500 direct KAYRU and on track 020° to BITES and hold.</p>
---	---

CRW ASOS 127.6	CHARLESTON APP CON 119.2 269.125	UNICOM 122.8 (CTAF)
--------------------------	--	-------------------------------



CATEGORY	A	B	C	D
CIRCLING	2640-1¼ 820 (900-1¼)	3020-1½ 1200 (1300-1½)	NA	



NE-4, 31 OCT 2024 to 28 NOV 2024

NE-4, 31 OCT 2024 to 28 NOV 2024