

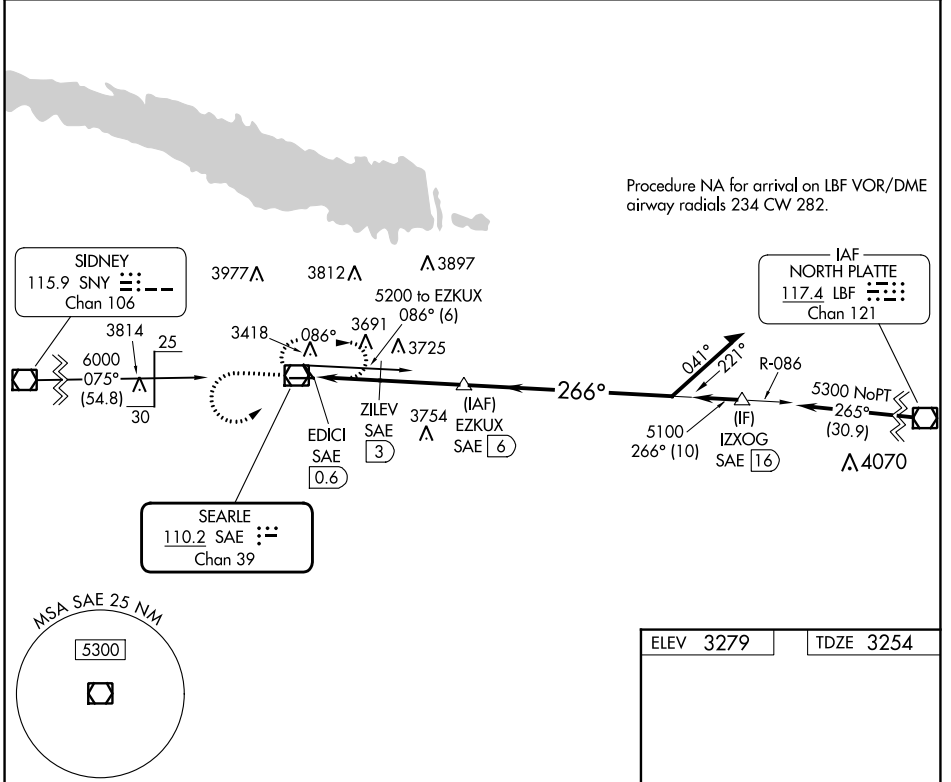
VOR/DME SAE <b>110.2</b> Chan <b>39</b>	APP CRS <b>266°</b>	Rwy Idg TDZE Apt Elev <b>5102</b> <b>3254</b> <b>3279</b>
---	------------------------	--

# VOR RWY 26

SEARLE FLD (OGA)

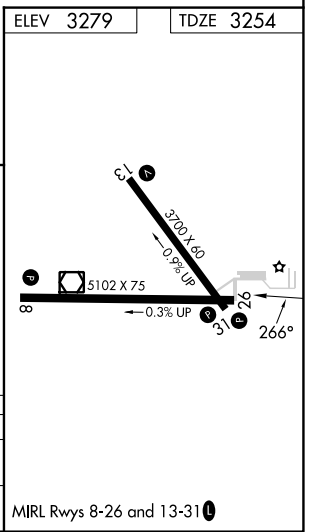
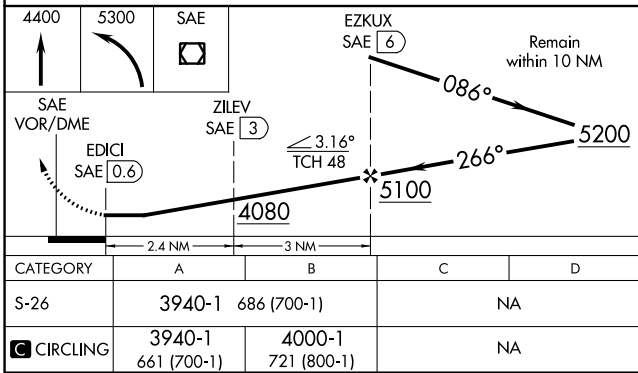
DME required. ▽ ▲	MISSED APPROACH: Climb to 4400 then climbing left turn to 5300 direct SAE VOR/DME and hold, continue climb-in-hold to 5300.
-------------------------	---

AWOS-3 <b>121.275</b>	DENVER CENTER <b>132.7 397.85</b>	UNICOM <b>122.8</b> (CTAF) <b>0</b>
--------------------------	--------------------------------------	--



NC-2, 31 OCT 2024 to 28 NOV 2024

NC-2, 31 OCT 2024 to 28 NOV 2024



CATEGORY	A	B	C	D
S-26	3940-1	686 (700-1)		NA
CIRCLING	3940-1 661 (700-1)	4000-1 721 (800-1)		NA

MIRL Rwy 8-26 and 13-31 **0**