

(SNIDR1.SNIDR) 24025

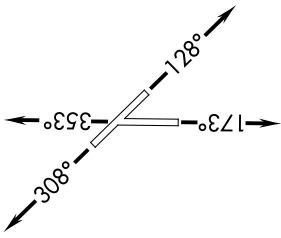
# SNIDR ONE DEPARTURE (RNAV)

AL-6080 (FAA)

NEW BRAUNFELS NTL (BAZ)  
NEW BRAUNFELS, TEXAS

SC-3, 31 OCT 2024 to 28 NOV 2024

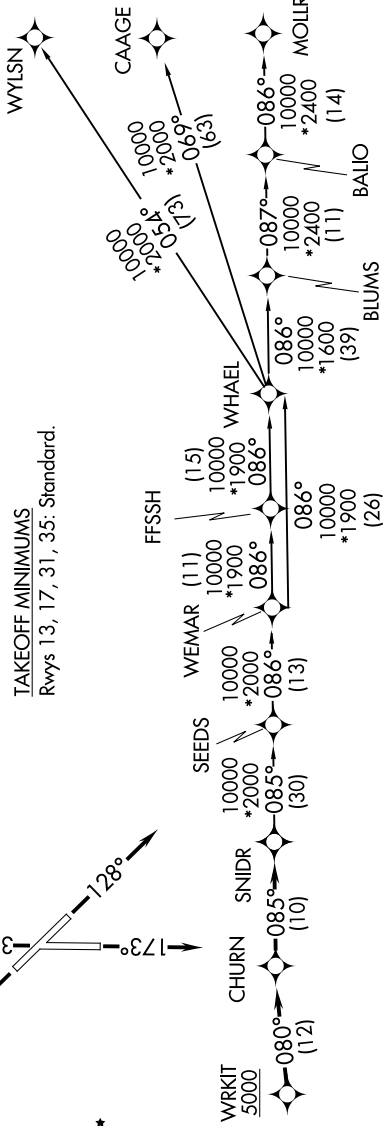
SAN ANTONIO DEP CON  
128.05 290.225  
ATS  
119.325  
CLNC DEL  
134.75  
GND CON  
120.175  
NEW BRAUNFELS TOWER \*  
127.05 285.4



**TOP ALTITUDE:  
ASSIGNED BY ATC**

RNAV 1 - DME/DME IRU or GPS.  
RADAR required.

TAKEOFF MINIMUMS  
Rwys 13, 17, 31, 35: Standard.

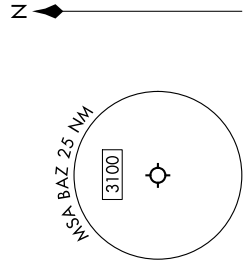


## DEPARTURE ROUTE DESCRIPTION

- TAKEOFF RUNWAY 13: Climb on heading 128° or as assigned by ATC, for vectors to WRKIT, thence . . .
- TAKEOFF RUNWAY 17: Climb on heading 173° or as assigned by ATC, for vectors to WRKIT, thence . . .
- TAKEOFF RUNWAY 31: Climb on heading 308° or as assigned by ATC, for vectors to WRKIT, thence . . .
- TAKEOFF RUNWAY 35: Climb on heading 353° or as assigned by ATC, for vectors to WRKIT, thence . . .

. . . on track 080° to CHURN, then on track 085° to SNIDR, then on transition. Maintain ATC assigned altitude.

- BLUMS TRANSITION (SNIDR1.BLUMS)
- CAAGE TRANSITION (SNIDR1.CAAGE)
- FFSH TRANSITION (SNIDR1.FFSH)
- MOLLR TRANSITION (SNIDR1.MOLLR)
- SEEDS TRANSITION (SNIDR1.SEEDS)
- WEMAR TRANSITION (SNIDR1.WEMAR)
- WHAEL TRANSITION (SNIDR1.WHAEL)
- WYLSN TRANSITION (SNIDR1.WYLSN)



Note: Chart not to scale.

# SNIDR ONE DEPARTURE (RNAV)

(SNIDR1.SNIDR) 25JAN24

NEW BRAUNFELS, TEXAS  
NEW BRAUNFELS NTL (BAZ)

SC-3, 31 OCT 2024 to 28 NOV 2024