

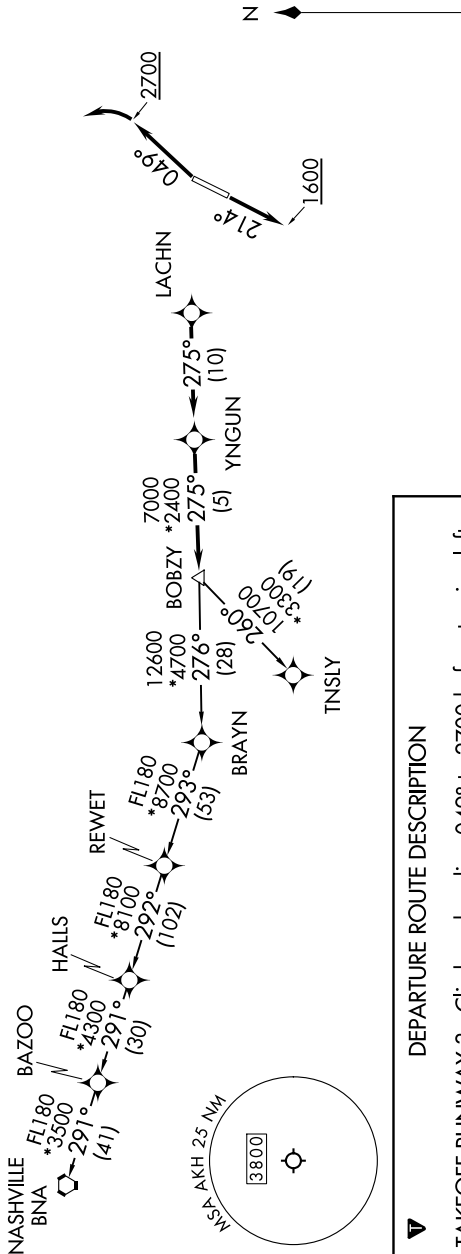
# BOBZY FIVE DEPARTURE (RNAV)

CHARLOTTE DEP CON  
120.05 257.2  
ASOS  
135.725  
CLNC DEL  
127.2  
UNICOM  
123.0

RNAV 1-DME/DME/IRU or GPS.  
RADAR required.

**TAKEOFF MINIMUMS**  
Rwys 3, 21: Standard.

**TOP ALTITUDE:**  
3000



## DEPARTURE ROUTE DESCRIPTION

**TAKEOFF RUNWAY 3:** Climb on heading 049° to 2700 before turning left, then on heading assigned by ATC, thence. . . .  
**TAKEOFF RUNWAY 21:** Climb on heading 214° to 1600 before proceeding north, then on heading assigned by ATC, thence. . . .

. . . . on RADAR vectors to LACHN, then on depicted route to BOBZY, then on assigned transition. Maintain 3000, expect clearance to filed altitude within 10 minutes after departure.

NASHVILLE TRANSITION (BOBZY5.BNA)  
TNSLY TRANSITION (BOBZY5.TNSLY)

**NOTE:** For turbo jets only.  
**NOTE:** If unable to accept climb rates, advise ATC on initial contact.  
**NOTE:** Transponder code will be issued via PDC or Charlotte CLNC DEL.  
**NOTE:** Upon reaching 10000 MSL, accelerate to and maintain 280K, if unable advise ATC.

NOTE: Chart not to scale.