

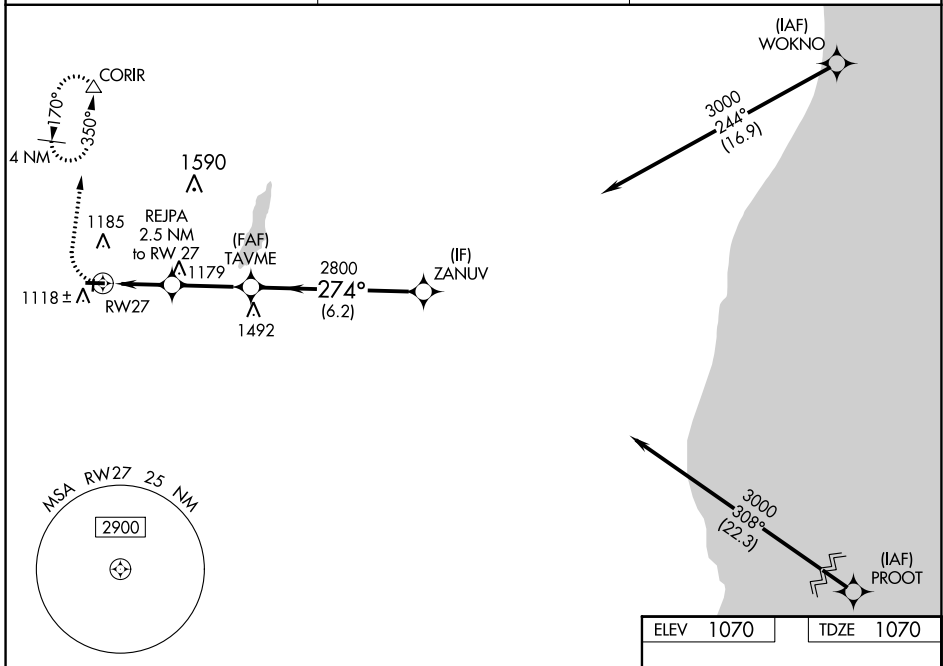
WAAS CH <b>86943</b> <b>W27A</b>	APP CRS <b>274°</b>	Rwy Idg TDZE Apf Elev	<b>3401</b> <b>1070</b> <b>1070</b>
--	------------------------	-----------------------------	---

# RNAV (GPS) RWY 27

HARTFORD MUNI (HXF)

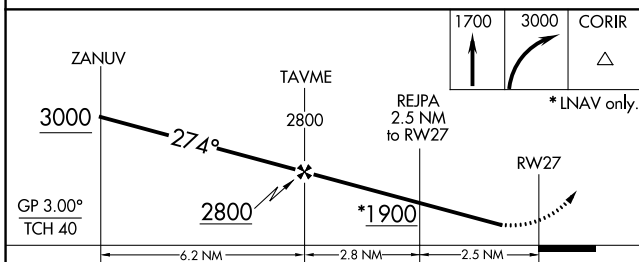
RNP APCH.	<p>⚠ Circling NA to Rwys 18 and 36. Rwy 27 helicopter visibility reduction below 3/4 SM NA. Baro-VNAV NA. Use West Bend altimeter setting.</p>	<p>MISSED APPROACH: Climb to 1700 then climbing right turn to 3000 direct CORIR and hold, continue climb-in-hold to 3000.</p>
-----------	--	---

ETB AWOS-3 <b>120.0</b>	MILWAUKEE APP CON <b>125.35 307.0</b>	UNICOM <b>123.0 (CTAF) 0</b>
----------------------------	--	---------------------------------



EC-3, 31 OCT 2024 to 28 NOV 2024

EC-3, 31 OCT 2024 to 28 NOV 2024



CATEGORY	A	B	C	D
LPV DA	1374-7/8	304 (400-7/8)		NA
RNAV/VNAV DA	1415-1	345 (400-1)		NA
RNAV MDA	1540-1	470 (500-1)		NA
<b>C</b> CIRCLING	1560-1	490 (500-1)		NA

ELEV 1070	TDZE 1070
-----------	-----------

MIRL Rwy 9-27  
REIL Rwy 9 and 27