

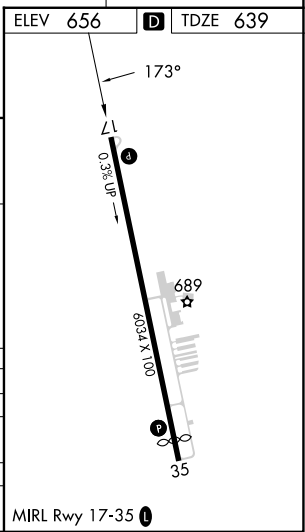
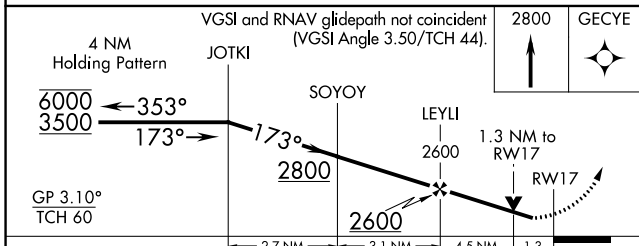
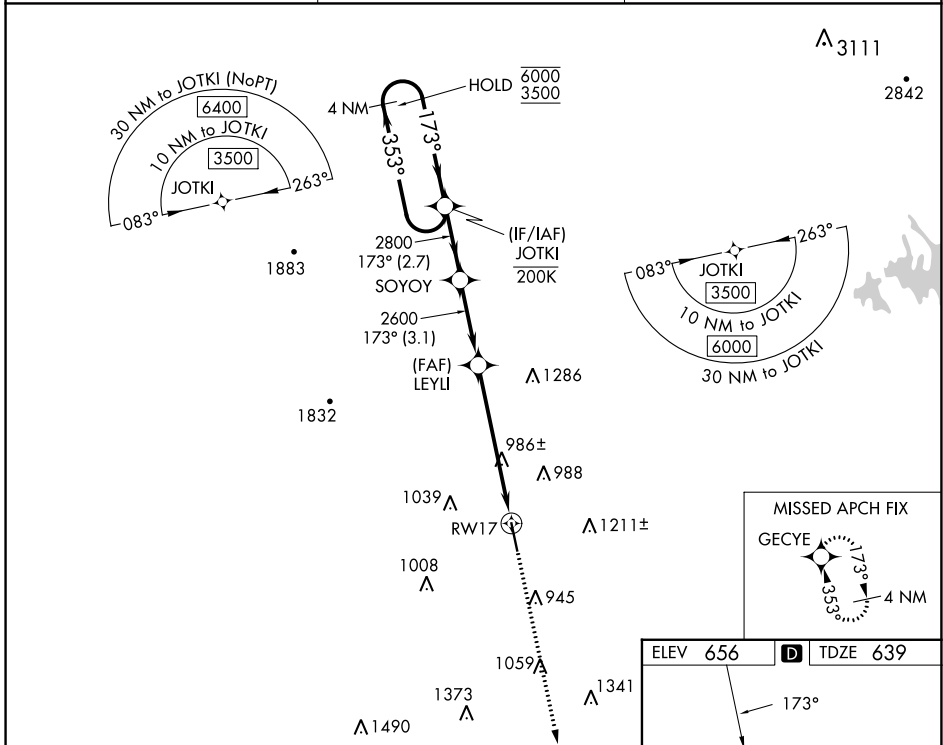
WAAS CH <b>65636</b> <b>W17A</b>	APP CRS <b>173°</b>	Rwy Idg TDZE <b>639</b> Apt Elev <b>656</b>	<b>6034</b>
--	------------------------	---	-------------

# RNAV (GPS) RWY 17

TOM B DAVID FLD (CZL)

RNP APCH-GPS.	MISSED APPROACH: Climb to 2800 direct GECYE and hold.
<p>▼ Rwy 17 helicopter visibility reduction below 3/4 SM NA. ▲ For uncompensated Baro-VNAV systems, LNAV/VNAV NA below -16°C or above 54°C.</p>	

AWOS-3PT <b>119.975</b>	ATLANTA CENTER <b>124.5 270.325</b>	UNICOM <b>122.8 (CTAF) 0</b>
----------------------------	--	---------------------------------



CATEGORY	A	B	C	D
LPV DA	930-1 291 (300-1)			
LNAV/VNAV DA	1101-1 3/8 462 (500-1 3/8)			
LNAV MDA	1240-1	601 (600-1)	1240-1 3/4	601 (600-1 3/4)
CIRCLING	1320-1	664 (700-1)	1580-2 3/4	1580-3
			924 (1000-2 3/4)	924 (1000-3)

SE-4, 31 OCT 2024 to 28 NOV 2024

SE-4, 31 OCT 2024 to 28 NOV 2024