

WAAS CH 58111 W18A	APP CRS 178°	Rwy Idg TDZE Apt Elev	6000 846 846
--	------------------------	-----------------------------	---

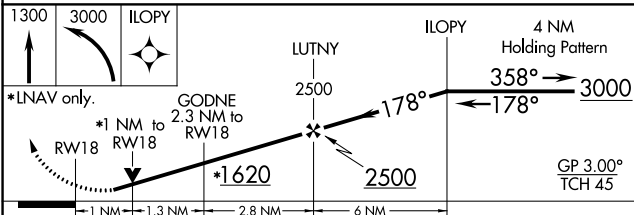
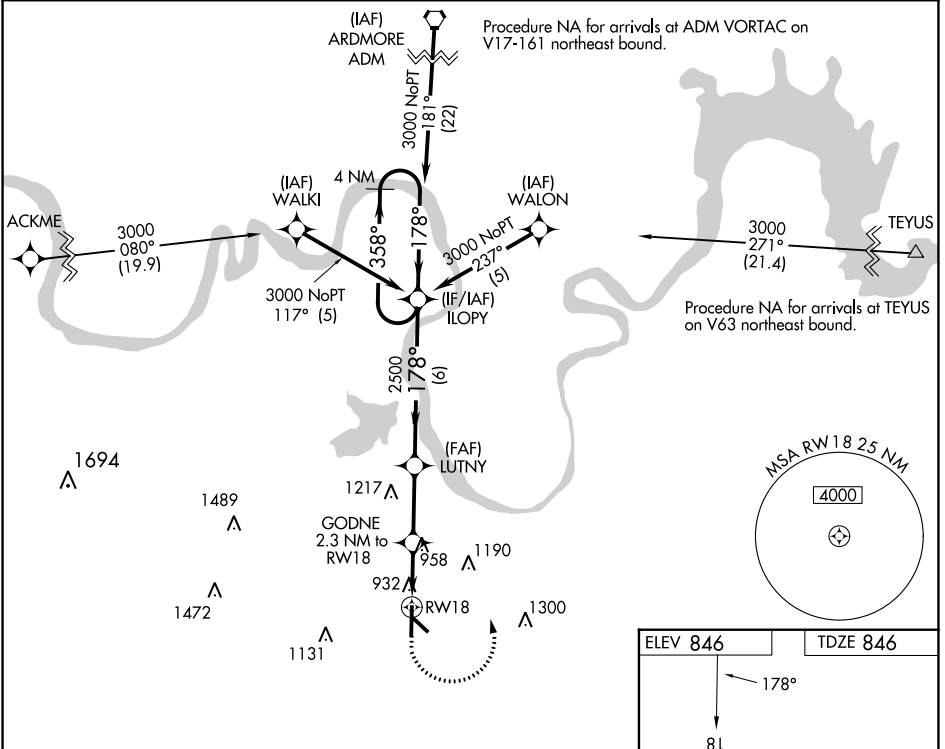
RNAV (GPS) RWY 18

GAINESVILLE MUNI (G.L.E.)

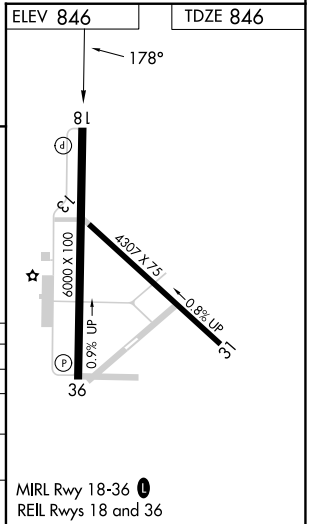
▼ For uncompensated Baro-VNAV systems, LNAV/VNAV NA below -16°C (4°F) or above 54°C (130°F). DME/DME RNP-0.3 NA. Rwy 18 helicopter visibility reduction below 3/4 SM NA.

▲ MISSED APPROACH: Climb to 1300 then climbing left turn to 3000 direct ILOPY and hold.

AWOS-3 118.375	FORT WORTH CENTER 124.75 323.0	UNICOM 123.0 (CTAF) 0
--------------------------	--	---------------------------------



CATEGORY	A	B	C	D
LPV DA		1113-7/8	267 (300-7/8)	
LNAV/VNAV DA		1114-7/8	268 (300-7/8)	
LNAV MDA		1220-1	374 (400-1)	
CIRCLING	1280-1 434 (500-1)	1320-1 474 (500-1)	1520-2 674 (700-2)	1600-2½ 754 (800-2½)



SC-2, 31 OCT 2024 to 28 NOV 2024

SC-2, 31 OCT 2024 to 28 NOV 2024