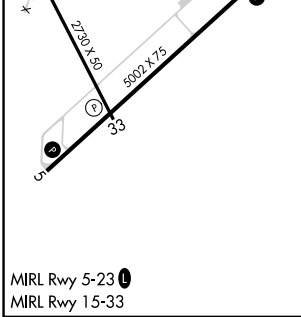
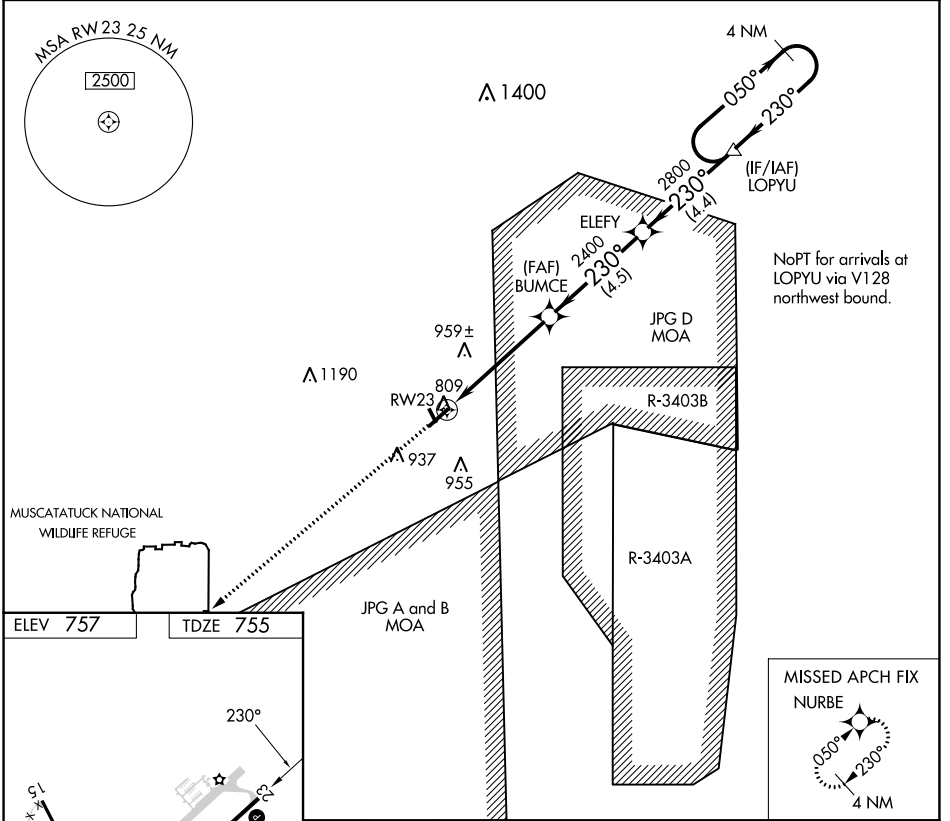


WAAS CH <b>63113</b> <b>W23A</b>	APP CRS <b>230°</b>	Rwy Idg TDZE Apt Elev	<b>5002</b> <b>755</b> <b>757</b>
--	------------------------	-----------------------------	---

# RNAV (GPS) Z RWY 23

NORTH VERNON (OVO)

<p><b>NA</b> DME/DME RNP-0.3 NA. When local altimeter setting not received, use Shelbyville altimeter setting and increase all DA 84 feet and all visibility 1/4 mile.</p>	MISSED APPROACH: Climb to 2700 direct NURBE and hold.	
AWOS-3 <b>120.625</b>	INDIANAPOLIS APP CON <b>134.85 317.8</b>	UNICOM <b>122.7 (CTAF)</b>



2700	NURBE	VGSi and RNAV glidepath not coincident (VGSi Angle 3.00/TCH 27).		4 NM Holding Pattern
		ELEFY	LOPYU	
	BUMCE			
	RWY 23			
		230°	2800	050° → 2800
		2400		← 230°
				GP 3.00° TCH 40
		5 NM	4.5 NM	4.4 NM
CATEGORY	A	B	C	D
LPV DA	1005-1 250 (300-1)			NA

EC-2, 31 OCT 2024 to 28 NOV 2024

EC-2, 31 OCT 2024 to 28 NOV 2024