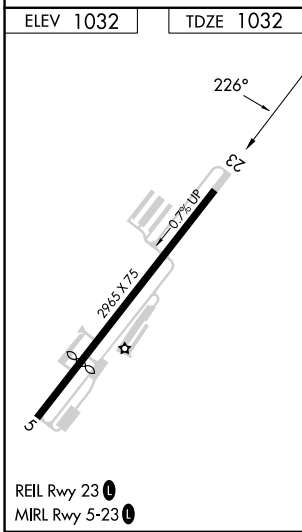
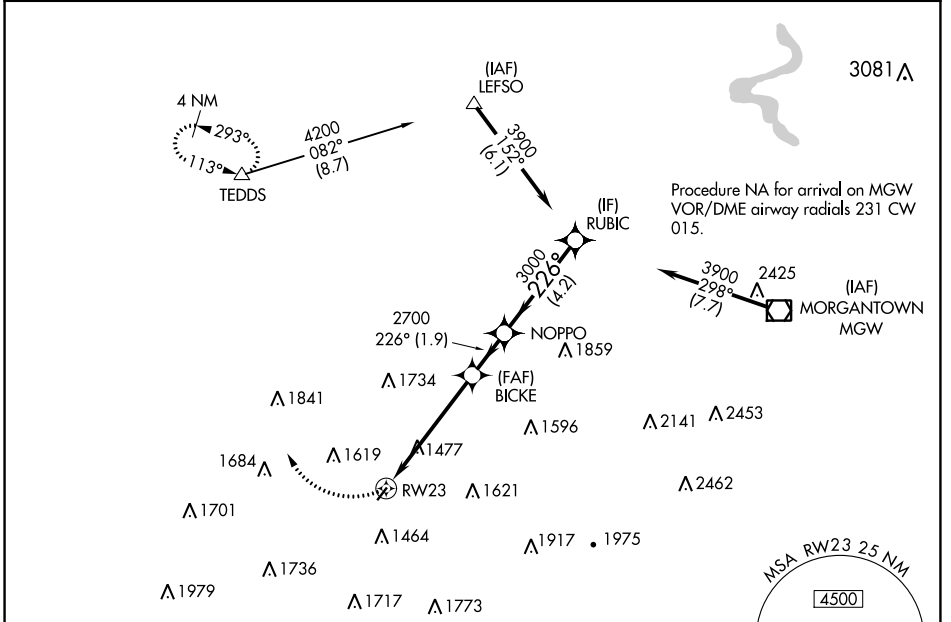


APP CRS 226°	Rwy Idg 2965
TDZE 1032	Apt Elev 1032

RNAV (GPS) RWY 23

FAIRMONT MUNI-FRANKMAN FLD (4G7)

RNP APCH. Procedure NA at night. Procedure NA for arrival on MGW VOR/DME airway radials 231 CW 015. Rwy 23 helicopter visibility reduction below 1 SM NA.		MISSED APPROACH: Climbing right turn to 4000 direct TEDDS and hold.	
CKB ASOS-3 127,825	CLARKSBURG APP CON* 121.15 284.65	CLNC DEL 118.35	UNICOM 122.8 (CTAF)



4000 TEDDS Visual Segment - Obstacles.		RUBIC		
RWY 23		BICKE	NOPPO	3900
5.1 NM		1.9 NM	4.2 NM	
CATEGORY	A	B	C	D
LNAV MDA	1840-1 808 (900-1)	1840-1¼ 808 (900-1¼)	1840-2½ 808 (900-2½)	NA
CIRCLING	1840-1 808 (900-1)	1840-1¼ 808 (900-1¼)	2020-3 988 (1000-3)	NA

NE-4, 31 OCT 2024 to 28 NOV 2024

NE-4, 31 OCT 2024 to 28 NOV 2024