

VORTAC MAF <b>114.8</b> Chan <b>95</b>	APP CRS <b>239°</b>	Rwy Idg TDZE Apt Elev	<b>5571</b> <b>2800</b> <b>2805</b>
--	------------------------	-----------------------------	---

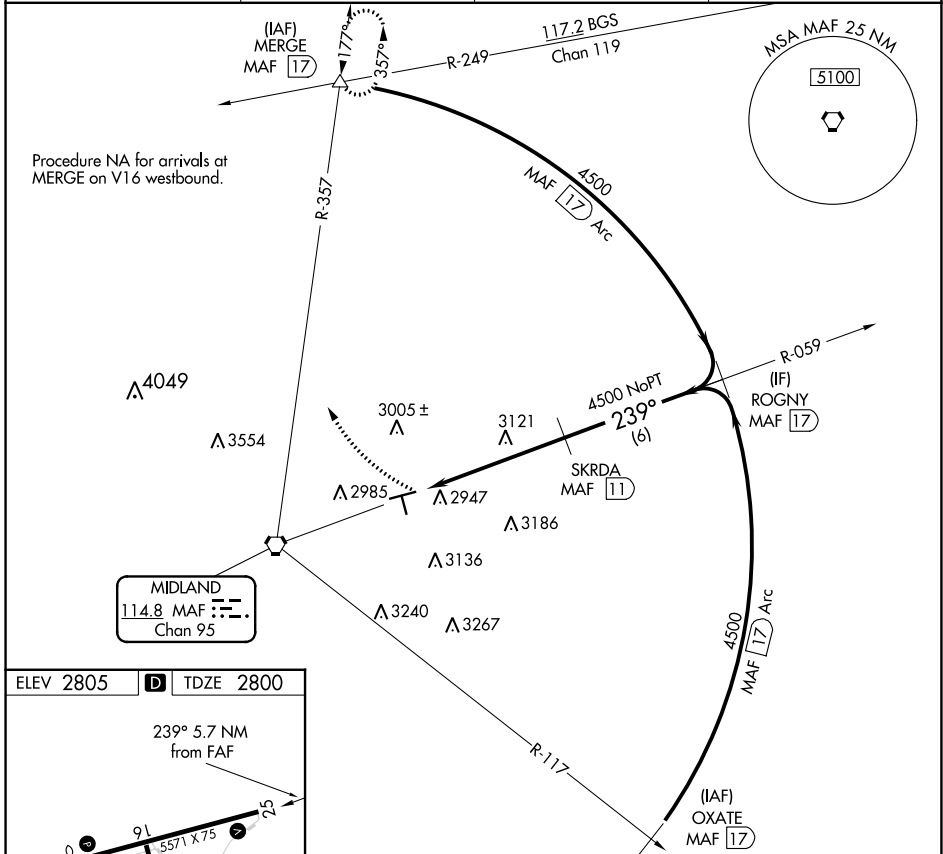
# VOR RWY 25

MIDLAND AIRPARK (MIDD)

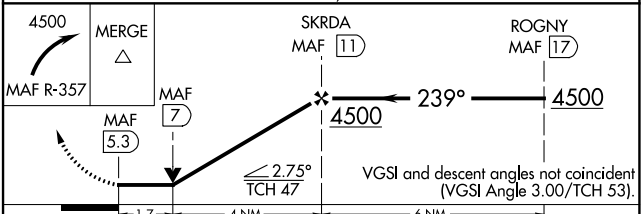
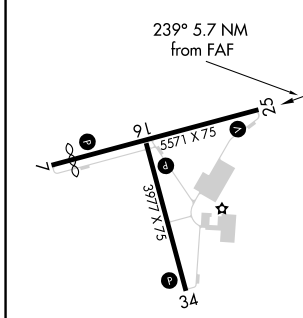
DME required. RADAR required for procedure entry at OXATE.

**▼** Rwy 25 helicopter visibility reduction below 3/4 SM NA.  
**▲** MISSED APPROACH: Climbing right turn to 4500 on MAF VORTAC R-357 to MERGE INT/17 DME and hold.

AWOS-3 <b>118.125</b>	MIDLAND APP CON * <b>124.6 290.4</b>	CLNC DEL <b>121.8</b>	UNICOM <b>122.7 (CTAF) 0</b>
--------------------------	---	--------------------------	---------------------------------



ELEV 2805	<b>D</b> TDZE 2800
-----------	--------------------



CATEGORY	A	B	C	D
S-25	3400-1	600 (600-1)	3400-1¾	600 (600-1¾)
<b>C</b> CIRCLING	3400-1	595 (600-1)	3440-1¾ 635 (700-1¾)	3700-3 895 (900-3)

SC-3, 31 OCT 2024 to 28 NOV 2024

SC-3, 31 OCT 2024 to 28 NOV 2024