

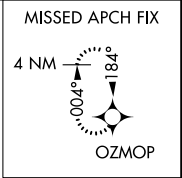
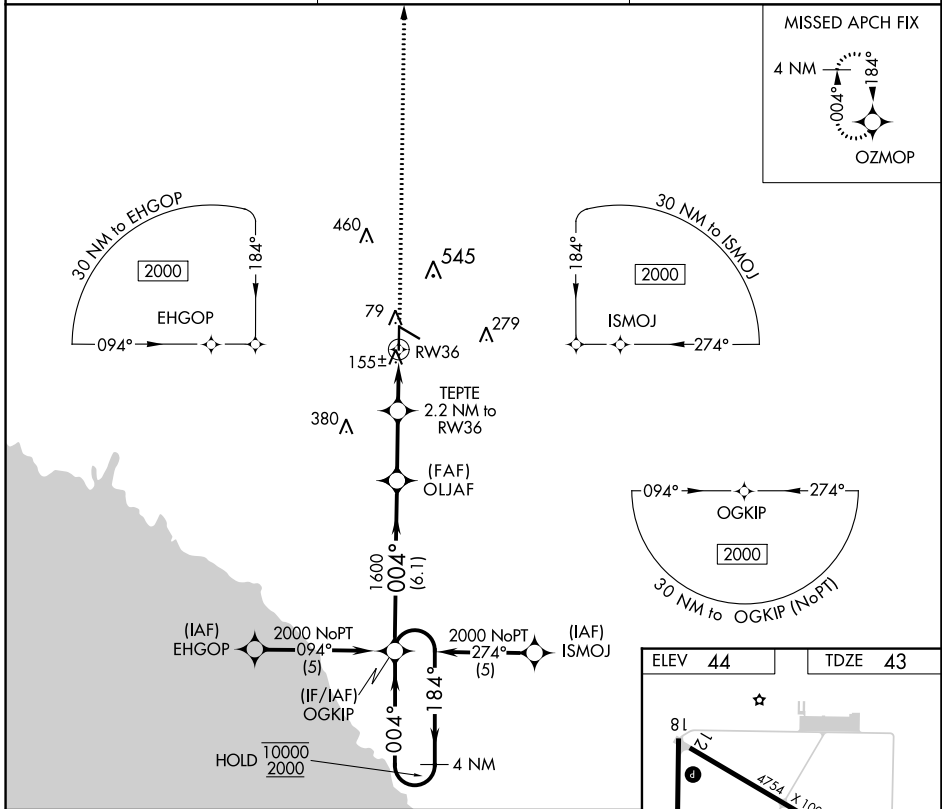
APP CRS	Rwy Idg	5013
004°	TDZE	43
	Apt Elev	44

RNAV (GPS) RWY 36

PERRY-FOLEY (F'PY)

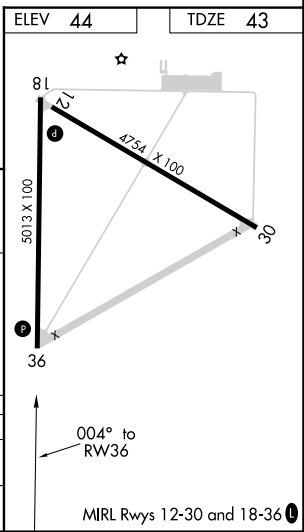
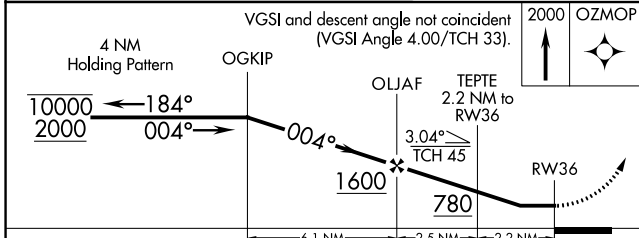
RNP APCH.	MISSED APPROACH: Climb to 2000 direct OZMOP and hold.
<p>▼ Circling Rwy 12 NA at night. Procedure NA at night.</p> <p>▲ Rwy 36 helicopter visibility reduction below 1 SM NA.</p>	

AWOS-3PT 118.375	JACKSONVILLE CENTER 127.8 352.0	UNICOM 122.8 (CTAF)
----------------------------	---	-------------------------------



SE-3, 31 OCT 2024 to 28 NOV 2024

SE-3, 31 OCT 2024 to 28 NOV 2024



CATEGORY	A	B	C	D
LNVA MDA	460-1	417 (500-1)	460-1¼	417 (500-1¼)
CIRCLING	640-1	596 (600-1)	860-2½ 816 (900-2½)	860-2¾ 816 (900-2¾)