

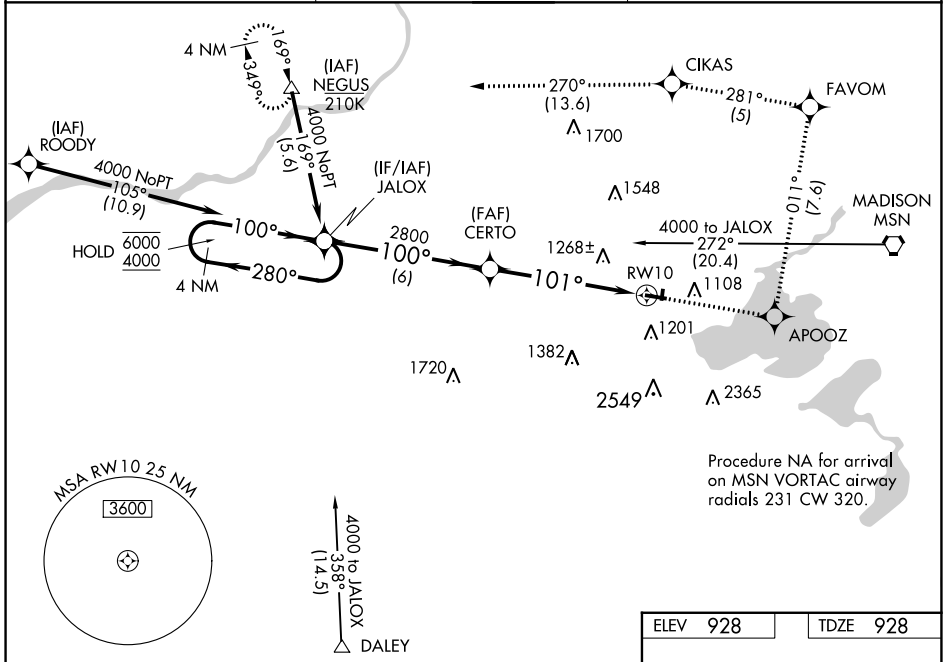
WAAS CH <b>62912</b> <b>W10A</b>	APP CRS <b>101°</b>	Rwy Idg TDZE Apt Elev	<b>4001</b> <b>928</b> <b>928</b>
--	------------------------	-----------------------------	---

# RNAV (GPS) RWY 10

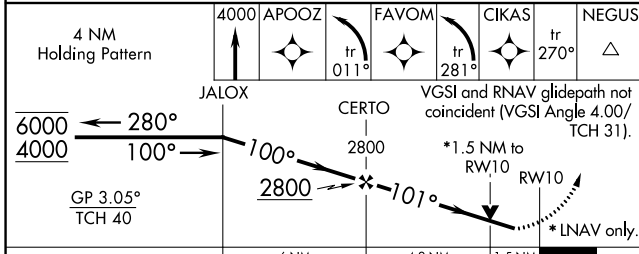
MIDDLETON MUNI/MOREY FLD (C29)

RNP APCH.	MISSED APPROACH: (Do not exceed 185K until APOOZ) Climb to 4000 direct APOOZ then climbing left turn on track 011° to FAVOM then climbing left turn on track 281° to CIKAS and track 270° to NEGUS and hold.
<p>⚠ Circling NA to Rws 1 and 19. Helicopter visibility reduction below 3/4 SM NA.</p> <p>⚠ For uncompensated Baro-VNAV systems, LNAV/VNAV NA below -16°C or above 54°C.</p>	

AWOS-3 <b>118.675</b>	MADISON APP CON * <b>135.45 343.7</b>	UNICOM <b>123.0 (CTAF) 0</b>
--------------------------	--	---------------------------------



Procedure NA for arrival on MSN VORTAC airway radials 231 CW 320.



ELEV 928	TDZE 928
MIRL Rwy 10-28 0	
REIL Rws 10 and 28 0	

EC-3, 31 OCT 2024 to 28 NOV 2024

EC-3, 31 OCT 2024 to 28 NOV 2024