

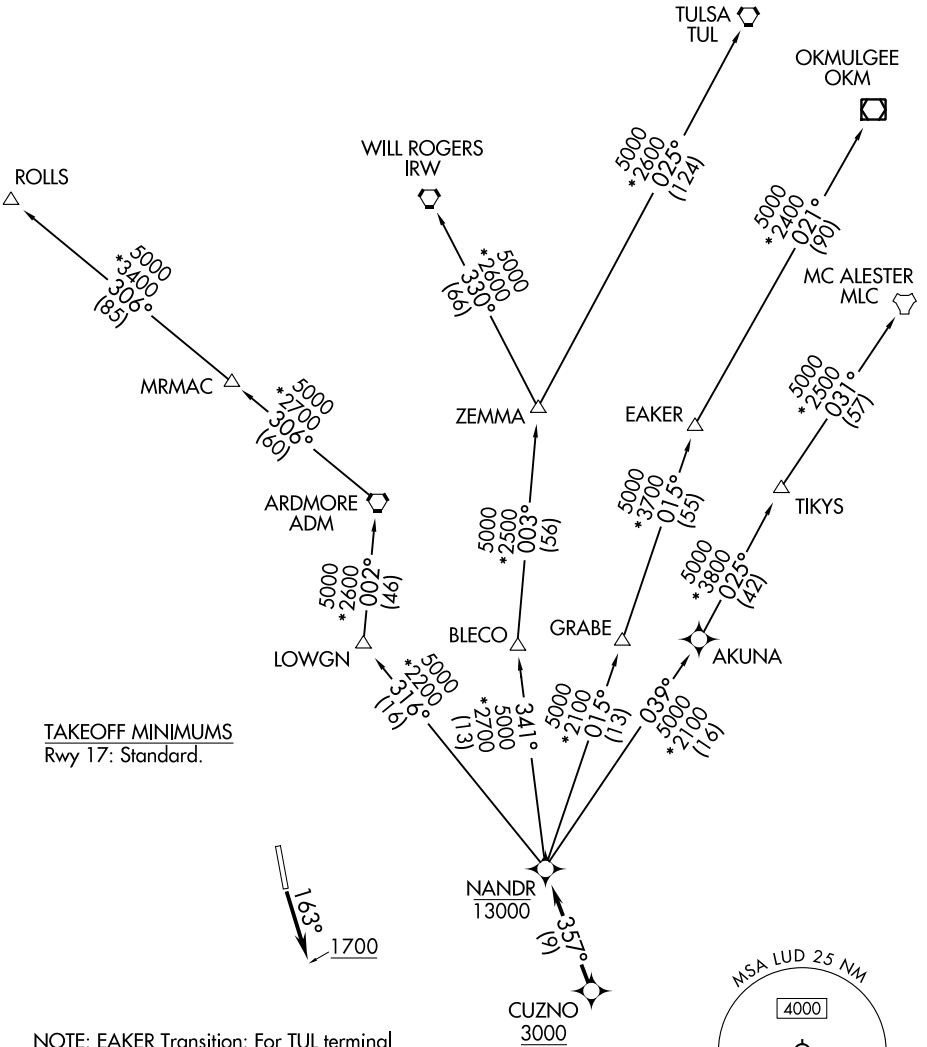
NANDR TWO DEPARTURE (RNAV)

LONE STAR DEP CON
118.1 306.95

RNAV 1 - DME/DME/IRU or GPS.

RADAR required.

**TOP ALTITUDE:
ASSIGNED BY ATC**



TAKEOFF MINIMUMS
Rwy 17: Standard.

- NOTE: EAKER Transition: For TUL terminal arrivals only.
- NOTE: TULSA Transition: For all aircraft overflying TUL VORTAC.
- NOTE: Aircraft arriving to the Oklahoma City terminal area, file and expect the ZEMMA enroute transition.

NOTE: Chart not to scale.

(CONTINUED ON FOLLOWING PAGE)

NANDR TWO DEPARTURE (RNAV)

SC-2, 31 OCT 2024 to 28 NOV 2024

SC-2, 31 OCT 2024 to 28 NOV 2024