

APP CRS	Rwy Idg	<b>4000</b>
<b>174°</b>	TDZE	<b>247</b>
	Apt Elev	<b>248</b>

# RNAV (GPS) RWY 17

PANOLA COUNTY-SHARPE FLD (4F2)

RNP APCH-GPS.

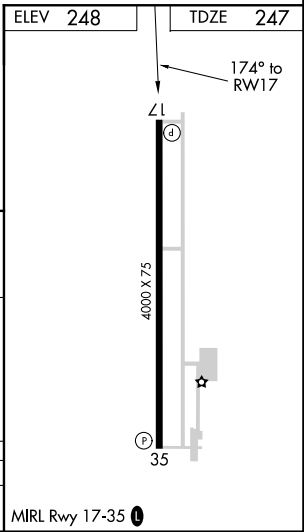
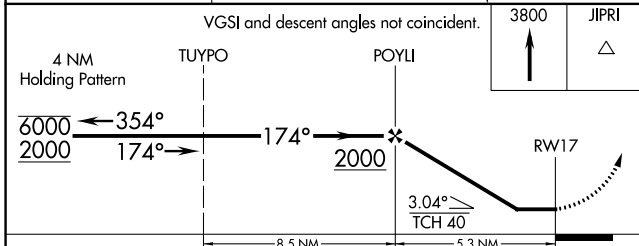
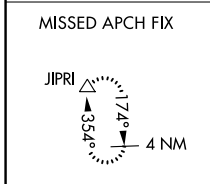
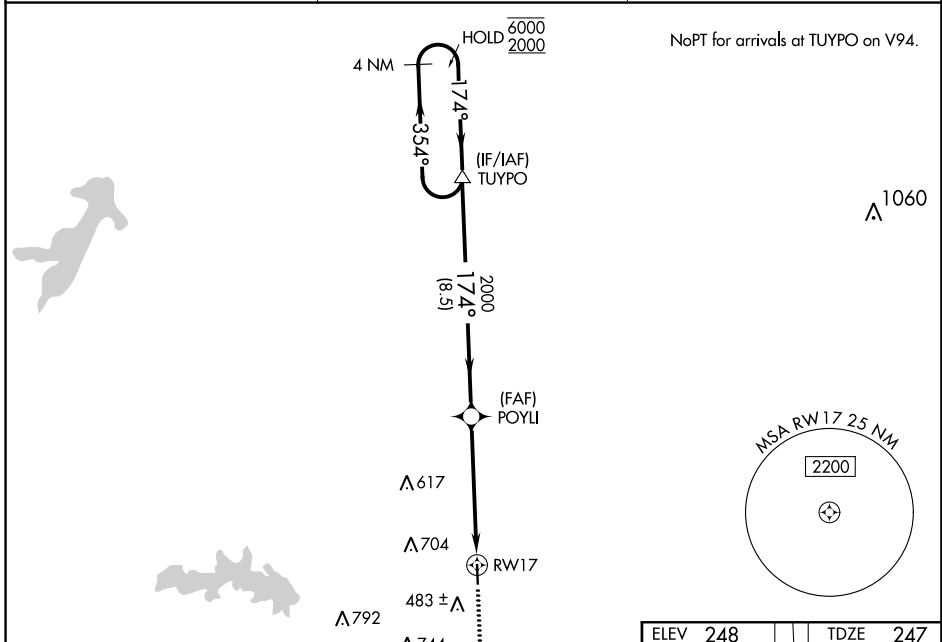
**▲** Procedure NA at night. Rwy 17 helicopter visibility reduction below 1 SM NA. When local altimeter setting not received, use Longview altimeter setting.

MISSED APPROACH: Climb to 3800 direct JIPRI and hold, continue climb-in-hold to 3800.

AWOS-3PT  
**121.125**

SHREVEPORT APP CON ★  
**119.9 335.55**

UNICOM  
**122.8 (CTAF) 0**



CATEGORY	A	B	C	D
LNAV MDA	760-1	513 (600-1)	760-1 3/8 513 (600-1 3/8)	NA

SC-2, 31 OCT 2024 to 28 NOV 2024

SC-2, 31 OCT 2024 to 28 NOV 2024